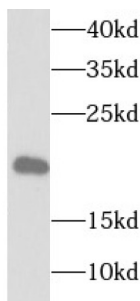
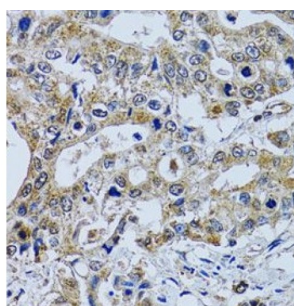


Tubulin Polymerization-Promoting Protein Family Member 3 (TPPP3) Antibody

Catalogue No.: abx238900



WB analysis of human kidney tissue, using TPPP3 antibody (1/1000 dilution).



IHC-P analysis of human colon carcinoma tissue, using TPPP3 Antibody (1/100 dilution).

TPPP3 Antibody is a Rabbit Polyclonal against TPPP3.

Target: Tubulin Polymerization-Promoting Protein Family Member 3 (TPPP3)

Clonality: Polyclonal

Reactivity: Human, Mouse, Rat

Tested Applications: ELISA, WB, IHC

Host: Rabbit

Recommended dilutions: WB: 1/500 - 1/2000, IHC: 1/50 - 1/200. Optimal dilutions/concentrations should be determined by the end user.

Conjugation: Unconjugated

Immunogen: tubulin polymerization-promoting protein family member 3

Isotype: IgG

Form: Liquid

Datasheet

Version: 2.0.0
Revision date: 30 Aug 2025



| | |
|----------------------------|--|
| Purity: | ≥ 95% (SDS-PAGE) |
| Purification: | Purified by immunogen affinity chromatography. |
| Storage: | Aliquot and store at -20°C. Avoid repeated freeze/thaw cycles. |
| Validity: | 12 months. |
| UniProt Primary AC: | Q9BW30 (UniProt , ExPASy) |
| String: | 9606.ENSP00000462435 |
| Molecular Weight: | Observed MW: 19 kDa |
| Buffer: | PBS, pH 7.3, with 0.02% sodium azide and 50% glycerol. |
| Concentration: | 2 mg/ml |
| Note: | THIS PRODUCT IS FOR RESEARCH USE ONLY. NOT FOR USE IN DIAGNOSTIC, THERAPEUTIC OR COSMETIC PROCEDURES. NOT FOR HUMAN OR ANIMAL CONSUMPTION. |

For Reference Only