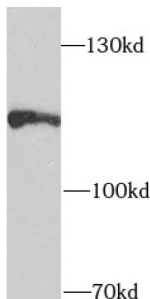
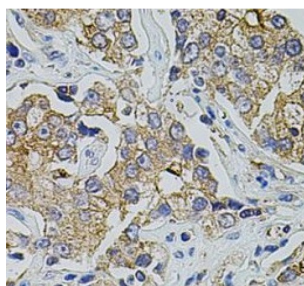


Transient Receptor Potential Cation Channel Subfamily A Member 1 (TRPA1) Antibody

Catalogue No.: abx239013



WB analysis of SH-SY5Y cells, using TRPA1 antibody (1/1000 dilution).



IHC-P analysis of human prostate cancer tissue, using TRPA1 antibody (1/100 dilution).

TRPA1 Antibody is a Rabbit Polyclonal against TRPA1.

Target: Transient Receptor Potential Cation Channel Subfamily A Member 1 (TRPA1)

Clonality: Polyclonal

Reactivity: Human, Mouse, Rat

Tested Applications: ELISA, WB, IHC

Host: Rabbit

Recommended dilutions: WB: 1/500 - 1/2000, IHC: 1/50 - 1/200. Optimal dilutions/concentrations should be determined by the end user.

Conjugation: Unconjugated

Immunogen: transient receptor potential cation channel, subfamily A, member 1

Isotype: IgG

Form: Liquid

Datasheet

Version: 2.0.0
Revision date: 12 Sep 2025



Purity:	≥ 95% (SDS-PAGE)
Purification:	Purified by immunogen affinity chromatography.
Storage:	Aliquot and store at -20°C. Avoid repeated freeze/thaw cycles.
Validity:	12 months.
UniProt Primary AC:	O75762 (UniProt , ExPASy)
KEGG:	hsa:8989
String:	9606.ENSP00000262209
Molecular Weight:	Observed MW: 120 kDa
Buffer:	PBS, pH 7.3, with 0.02% sodium azide and 50% glycerol.
Concentration:	2 mg/ml
Note:	THIS PRODUCT IS FOR RESEARCH USE ONLY. NOT FOR USE IN DIAGNOSTIC, THERAPEUTIC OR COSMETIC PROCEDURES. NOT FOR HUMAN OR ANIMAL CONSUMPTION.