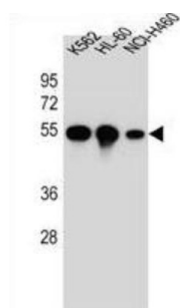
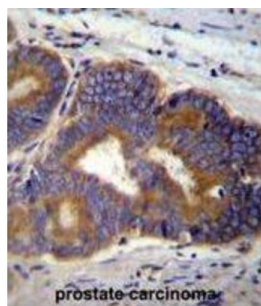
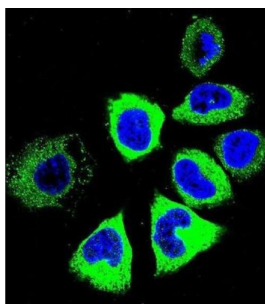


## YI016 Antibody

Catalogue No.: abx026366



Tubulin is the major constituent of microtubules. It binds two moles of GTP, one at an exchangeable site on the beta chain and one at a non-exchangeable site on the alpha-chain (By similarity).

**Target:** YI016

**Clonality:** Polyclonal

**Reactivity:** Human

**Tested Applications:** ELISA, WB, IHC, IF/ICC, FCM

**Host:** Rabbit

**Recommended dilutions:** WB: 1/1000, IHC-P: 1/10 - 1/50, IF/ICC: 1/10 - 1/50, FCM: 1/10 - 1/50. Not tested in IHC-F. Optimal dilutions/concentrations should be determined by the end user.

# Datasheet

Version: 2.0.0

Revision date: 01 Sep 2025



|                      |  |
|----------------------|--|
| <b>Conjugation:</b>  | Unconjugated   |
| <b>Immunogen:</b>    | KLH-conjugated synthetic peptide between 253-280 amino acids from the C-terminal region of human YI016.                                    |
| <b>Isotype:</b>      | IgG  |
| <b>Form:</b>         | Liquid   |
| <b>Purification:</b> | Purified through a protein A column, followed by peptide affinity purification.  |
| <b>Storage:</b>      | Aliquot and store at -20°C. Avoid repeated freeze/thaw cycles.   |
| <b>Gene Symbol:</b>  | YI016  |
| <b>Buffer:</b>       | PBS containing 0.09% sodium azide.   |
| <b>Note:</b>         | THIS PRODUCT IS FOR RESEARCH USE ONLY. NOT FOR USE IN DIAGNOSTIC, THERAPEUTIC OR COSMETIC PROCEDURES. NOT FOR HUMAN OR ANIMAL CONSUMPTION. |

For Reference Only