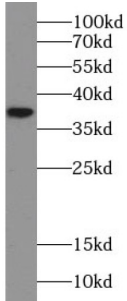
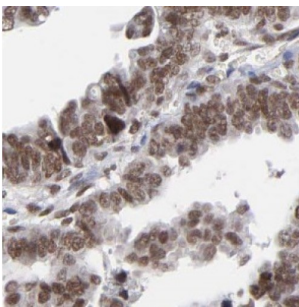


# Ubiquitin-Like Domain-Containing CTD Phosphatase 1 (UBLCP1) Antibody

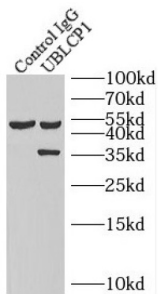
Catalogue No.: abx239201



WB analysis of K-562 cells, using UBLCP1 antibody (1/500 dilution).



IHC-P analysis of human ovary tumor tissue, using UBLCP1 antibody (1/50 dilution).



IP analysis of K-562 cell lysate (1760 µg), using UBLCP1 antibody (3 µg, detection: 1/500 dilution).

UBLCP1 Antibody is a Rabbit Polyclonal against UBLCP1.

**Target:** Ubiquitin-Like Domain-Containing CTD Phosphatase 1 (UBLCP1)

**Clonality:** Polyclonal

**Reactivity:** Human, Mouse, Rat

**Tested Applications:** ELISA, WB, IHC, IF/ICC, IP

**Host:** Rabbit

**Recommended dilutions:** WB: 1/500 - 1/2000, IHC: 1/20 - 1/200, IF/ICC: 1/20 - 1/200, IP: 1/200 - 1/1000. Optimal dilutions/concentrations should be determined by the end user.

# Datasheet

Version: 3.0.0  
Revision date: 05 Sep 2025



<b>Conjugation:</b>	Unconjugated
<b>Immunogen:</b>	ubiquitin-like domain containing CTD phosphatase 1
<b>Isotype:</b>	IgG
<b>Form:</b>	Liquid
<b>Purity:</b>	≥ 95% (SDS-PAGE)
<b>Purification:</b>	Purified by immunogen affinity chromatography.
<b>Storage:</b>	Aliquot and store at -20°C. Avoid repeated freeze/thaw cycles.
<b>Validity:</b>	12 months.
<b>UniProt Primary AC:</b>	Q8WVY7 ( <a href="#">UniProt</a> , <a href="#">ExPASy</a> )
<b>Gene Symbol:</b>	UBLCP1
<b>GeneID:</b>	<a href="#">134510</a>
<b>OMIM:</b>	<a href="#">609867</a>
<b>HGNC:</b>	28110
<b>KEGG:</b>	hsa:134510
<b>Ensembl:</b>	ENSG00000164332
<b>String:</b>	<a href="#">9606.ENSP00000296786</a>
<b>Molecular Weight:</b>	Observed MW: 37 kDa
<b>Buffer:</b>	PBS, pH 7.3, with 0.02% sodium azide and 50% glycerol.
<b>Concentration:</b>	2 mg/ml
<b>Note:</b>	THIS PRODUCT IS FOR RESEARCH USE ONLY. NOT FOR USE IN DIAGNOSTIC, THERAPEUTIC OR COSMETIC PROCEDURES. NOT FOR HUMAN OR ANIMAL CONSUMPTION.