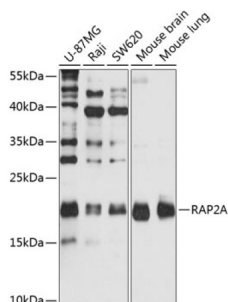


RAP2A, Member of RAS Oncogene Family (RAP2A) Antibody

Catalogue No.: abx002039



Western blot analysis of extracts of various cell lines using RAP2A Antibody (1/1000 dilution).

RAP2A Antibody is a Rabbit Polyclonal antibody against RAP2A. Ras oncogenes encode GTP-binding proteins that are capable of transforming immortalized cells in culture. Two Ras-related human genes, designated RAP1A and RAP1B, encode 95% homologous proteins (namely Rap 1A and Rap 1B) that share a similar C-terminal Cys-Ali-Ali-Xaa sequence with Ras proteins and are ubiquitously expressed in mammalian tissues. The putative effector domain of Ras proteins, whose integrity is required for cell transformation as well as interaction with the putative effector protein GAP, is conserved in both Rap 1 proteins. Rap 1A is thought to interfere with Ras effector function by binding to Ras GAP in a GTP-dependent manner without affecting Rap 1A GTPase activity. Rap 2, another Ras-related protein, shares 60% identity with Rap 1A and exhibits a carboxy terminal CAAX motif and two upstream cysteines similar to those of the H-Ras, K-Ras and N-Ras proteins. In contrast with Rap 1A and Rap 1B, overexpression of Rap 2 does not interfere with the Ras signaling pathway..

Target: RAP2A, Member of RAS Oncogene Family (RAP2A)

Clonality: Polyclonal

Reactivity: Human, Mouse

Tested Applications: WB

Host: Rabbit

Recommended dilutions: WB: 1/500 - 1/1000. Optimal dilutions/concentrations should be determined by the end user.

Conjugation: Unconjugated

Immunogen: Recombinant fusion protein corresponding to human RAP2A

Isotype: IgG

Form: Liquid

Purification: Purified by affinity chromatography.

Storage: Aliquot and store at -20°C. Avoid repeated freeze/thaw cycles.

Datasheet

Version: 4.0.0
Revision date: 20 Aug 2025



UniProt Primary AC: P10114 ([UniProt](#), [ExPASy](#))

Gene Symbol: RAP2A

GeneID: [5911](#)

NCBI Accession: NP_066361.1

KEGG: hsa:5911

String: [9606.ENSP00000245304](#)

Molecular Weight: Calculated MW: 20 kDa
Observed MW: 21 kDa

Buffer: PBS, pH 7.3, containing 0.02% sodium azide, 50% glycerol.

Concentration: 1 mg/ml

Note: THIS PRODUCT IS FOR RESEARCH USE ONLY. NOT FOR USE IN DIAGNOSTIC, THERAPEUTIC OR COSMETIC PROCEDURES. NOT FOR HUMAN OR ANIMAL CONSUMPTION.

For Reference Only