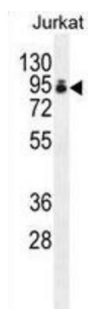
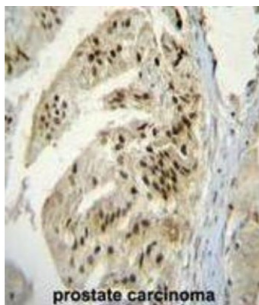


Poly(A) Polymerase Alpha (PAPOLA) Antibody

Catalogue No.: abx026390



Polymerase that creates the 3'-poly (A) tail of mRNA's. Also required for the endoribonucleolytic cleavage reaction at some polyadenylation sites. May acquire specificity through interaction with a cleavage and polyadenylation specificity factor (CPSF) at its C-terminus.

Target: Poly(A) Polymerase Alpha (PAPOLA)

Clonality: Polyclonal

Reactivity: Human

Tested Applications: ELISA, WB, IHC

Host: Rabbit

Recommended dilutions: WB: 1/1000, IHC-P: 1/50 - 1/100. Not tested in IHC-F. Optimal dilutions/concentrations should be determined by the end user.

Conjugation: Unconjugated

Immunogen: KLH-conjugated synthetic peptide between 407-435 amino acids from the Central region of human PAP.

Isotype: IgG

Form: Liquid

Datasheet

Version: 2.0.0
Revision date: 07 Jun 2025



Purification:	Purified through a protein A column, followed by peptide affinity purification.
Storage:	Aliquot and store at -20°C. Avoid repeated freeze/thaw cycles.
UniProt Primary AC:	P51003 (UniProt , ExPASy)
Gene Symbol:	PAPOLA
GeneID:	10914
HGNC:	14981
KEGG:	hsa:10914
String:	9606.ENSP00000216277
Molecular Weight:	Calculated MW: 82.8 kDa
Buffer:	PBS containing 0.09% sodium azide.
Specificity:	Predicted to react with Cow PAPOLA.
Note:	THIS PRODUCT IS FOR RESEARCH USE ONLY. NOT FOR USE IN DIAGNOSTIC, THERAPEUTIC OR COSMETIC PROCEDURES. NOT FOR HUMAN OR ANIMAL CONSUMPTION.