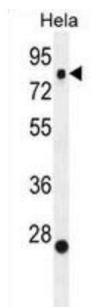
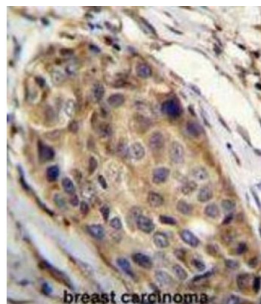
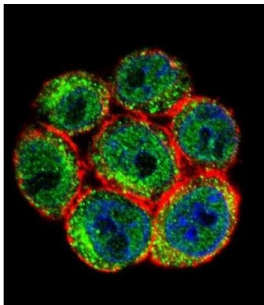


Slingshot Homolog 3 (SSH3) Antibody

Catalogue No.: abx026394



The ADF (actin-depolymerizing factor) /cofilin family (see MIM 601442) is composed of stimulus-responsive mediators of actin dynamics. ADF/cofilin proteins are inactivated by kinases such as LIM domain kinase-1 (LIMK1; MIM 601329). The SSH family appears to play a role in actin dynamics by reactivating ADF/cofilin proteins in vivo (Niwa et al., 2002 [PubMed 11832213]).

Target: Slingshot Homolog 3 (SSH3)

Clonality: Polyclonal

Reactivity: Human

Tested Applications: ELISA, WB, IHC, IF/ICC, FCM

Host: Rabbit

Recommended dilutions: WB: 1/1000, IHC-P: 1/50 - 1/100, IF/ICC: 1/10 - 1/50, FCM: 1/10 - 1/50. Not tested in IHC-F.
Optimal dilutions/concentrations should be determined by the end user.

Datasheet

Version: 4.0.0
Revision date: 06 Mar 2025



Conjugation:	Unconjugated
Immunogen:	KLH-conjugated synthetic peptide between 575-602 amino acids from the C-terminal region of human SSH3.
Isotype:	IgG
Form:	Liquid
Purification:	Purified through a protein A column, followed by peptide affinity purification.
Storage:	Aliquot and store at -20°C. Avoid repeated freeze/thaw cycles.
UniProt Primary AC:	Q8TE77 (UniProt , ExPASy)
Gene Symbol:	SSH3
KEGG:	hsa:54961
String:	9606.ENSP00000312081
Molecular Weight:	Calculated MW: 73 kDa
Buffer:	PBS containing 0.09% sodium azide.
Note:	THIS PRODUCT IS FOR RESEARCH USE ONLY. NOT FOR USE IN DIAGNOSTIC, THERAPEUTIC OR COSMETIC PROCEDURES. NOT FOR HUMAN OR ANIMAL CONSUMPTION.