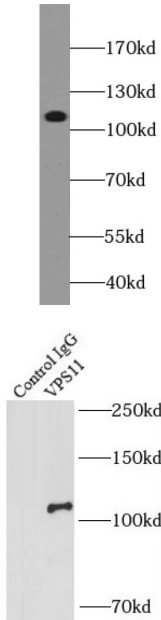


# Vacuolar Protein Sorting-Associated Protein 11 Homolog (VPS11) Antibody

Catalogue No.: abx239426



WB analysis of human brain tissue, using VPS11 antibody (1/500 dilution).

IP analysis of HEK-293 cell lysate (1480 µg), using VPS11 antibody (4 µg, detection: 1/500 dilution).

VPS11 Antibody is a Rabbit Polyclonal against VPS11.

**Target:** Vacuolar Protein Sorting-Associated Protein 11 Homolog (VPS11)

**Clonality:** Polyclonal

**Reactivity:** Human, Mouse, Rat

**Tested Applications:** ELISA, WB, IF/ICC, FCM, IP

**Host:** Rabbit

**Recommended dilutions:** WB: 1/500 - 1/5000, IF/ICC: 1/10 - 1/100, IP: 1/200 - 1/2000. Optimal dilutions/concentrations should be determined by the end user.

**Conjugation:** Unconjugated

**Immunogen:** vacuolar protein sorting 11 homolog(S. cerevisiae)

**Isotype:** IgG

**Form:** Liquid

# Datasheet

Version: 4.0.0  
Revision date: 20 Mar 2025



<b>Purity:</b>	≥ 95% (SDS-PAGE)
<b>Purification:</b>	Purified by immunogen affinity chromatography.
<b>Storage:</b>	Aliquot and store at -20°C. Avoid repeated freeze/thaw cycles.
<b>Validity:</b>	12 months.
<b>UniProt Primary AC:</b>	Q9H270 ( <a href="#">UniProt</a> , <a href="#">ExpASY</a> )
<b>Gene Symbol:</b>	VPS11
<b>GeneID:</b>	<a href="#">55823</a>
<b>OMIM:</b>	<a href="#">608549</a>
<b>HGNC:</b>	14583
<b>Ensembl:</b>	ENSG00000160695
<b>String:</b>	<a href="#">9606.ENSP00000481126</a>
<b>Molecular Weight:</b>	Observed MW: 108 kDa
<b>Buffer:</b>	PBS, pH 7.3, with 0.02% sodium azide and 50% glycerol.
<b>Concentration:</b>	2 mg/ml
<b>Note:</b>	THIS PRODUCT IS FOR RESEARCH USE ONLY. NOT FOR USE IN DIAGNOSTIC, THERAPEUTIC OR COSMETIC PROCEDURES. NOT FOR HUMAN OR ANIMAL CONSUMPTION.

For Reference Only