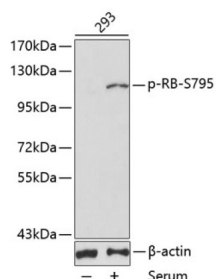
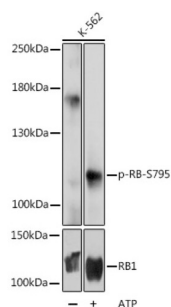


Retinoblastoma Protein 1 Phospho-Ser795 (RB1 pS795) Antibody

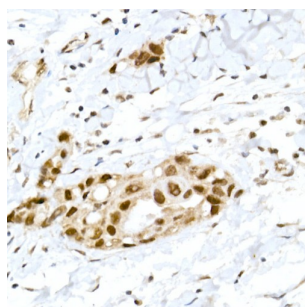
Catalogue No.: abx000160



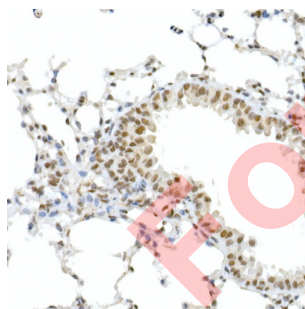
Western blot analysis of lysates from 293 cells, using Phospho-RB-S795 Antibody. 293 cells were treated by 10% FBS at 37 °C for 30 minutes after serum-starvation overnight. Secondary antibody: HRP-conjugated Goat anti-Rabbit IgG (H+L) at 1/10000 dilution. Lysates/proteins: 25 µg per lane. Blocking buffer: 3% BSA.



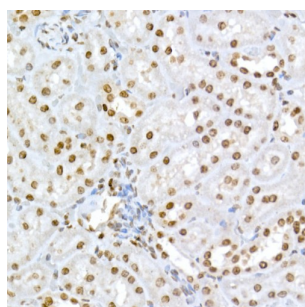
Western blot analysis of lysates from K-562 cells, using Phospho-RB-S795 Antibody. K-562 cells were treated by ATP (5 mM) at 30 °C for 1 hour. Secondary antibody: HRP-conjugated Goat anti-Rabbit IgG (H+L) at 1/10000 dilution. Lysates/proteins: 25 µg per lane. Blocking buffer: 3% BSA. Exposure time: 1s.



Immunohistochemistry analysis of paraffin-embedded Human breast cancer using Phospho-RB-S795 Antibody at dilution of 1/50 (40x lens). High pressure antigen retrieval performed in 0.01 M Citrate buffer (pH 6.0) prior to IHC staining.



Immunohistochemistry analysis of paraffin-embedded Mouse lung using Phospho-RB-S795 Antibody at dilution of 1/50 (40x lens). High pressure antigen retrieval performed in 0.01 M Citrate buffer (pH 6.0) prior to IHC staining.



Immunohistochemistry analysis of paraffin-embedded Rat kidney using Phospho-RB-S795 Antibody at dilution of 1/50 (40x lens). High pressure antigen retrieval performed in 0.01 M Citrate buffer (pH 6.0) prior to IHC staining.

Datasheet

Version: 4.0.0
Revision date: 18 Aug 2025



RB1 (pS795) Antibody is a Rabbit Polyclonal antibody against RB1 (pS795). The protein encoded by this gene is a negative regulator of the cell cycle and was the first tumor suppressor gene found. The encoded protein also stabilizes constitutive heterochromatin to maintain the overall chromatin structure. The active, hypophosphorylated form of the protein binds transcription factor E2F1. Defects in this gene are a cause of childhood cancer retinoblastoma (RB1), bladder cancer, and osteogenic sarcoma.

Target:	Retinoblastoma Protein 1 Phospho-Ser795 (RB1 pS795)
Clonality:	Polyclonal
Target Modification:	Ser795
Modification:	Phosphorylation
Reactivity:	Human, Mouse, Rat
Tested Applications:	ELISA, WB, IHC
Host:	Rabbit
Recommended dilutions:	ELISA: 1 µg/ml, WB: 1/500 - 1/1000, IHC-P: 1/50 - 1/200. Not tested in IHC-F. Optimal dilutions/concentrations should be determined by the end user.
Conjugation:	Unconjugated
Immunogen:	A synthetic phosphorylated peptide around S795 of human RB.
Isotype:	IgG
Form:	Liquid
Purification:	Purified by affinity chromatography.
Storage:	Aliquot and store at -20°C. Avoid repeated freeze/thaw cycles.
UniProt Primary AC:	P06400 (UniProt , ExPASy)
Gene Symbol:	RB1
GeneID:	5925
NCBI Accession:	NP_000312.2
KEGG:	hsa:5925

Datasheet

Version: 4.0.0

Revision date: 18 Aug 2025



String: [9606.ENSPO0000267163](#)

Molecular Weight: Calculated MW: 106 kDa
Observed MW: 106 kDa

Buffer: PBS, pH 7.3, containing 0.02% sodium azide, 50% glycerol.

Concentration: > 0.2 mg/ml

Note: THIS PRODUCT IS FOR RESEARCH USE ONLY. NOT FOR USE IN DIAGNOSTIC, THERAPEUTIC OR COSMETIC PROCEDURES. NOT FOR HUMAN OR ANIMAL CONSUMPTION.

For Reference Only