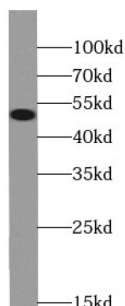
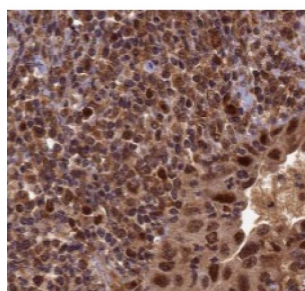


WT1 Associated Protein (WTAP) Antibody

Catalogue No.: abx239530



WB analysis of HEK-293 cells, using WTAP antibody (1/2000 dilution).



IHC-P analysis of human cervical cancer tissue, using WTAP antibody (1/50 dilution).

WTAP Antibody is a Mouse Monoclonal against WTAP.

Target: WT1 Associated Protein (WTAP)

Clonality: Monoclonal

Reactivity: Human, Mouse, Rat

Tested Applications: ELISA, WB, IHC

Host: Mouse

Recommended dilutions: WB: 1/1000 - 1/10000, IHC: 1/50 - 1/500. Optimal dilutions/concentrations should be determined by the end user.

Conjugation: Unconjugated

Immunogen: Wilms tumor 1 associated protein

Isotype: IgG₁

Form: Liquid

Purity: ≥ 95% (SDS-PAGE)

Datasheet

Version: 4.0.0

Revision date: 27 Aug 2025



Purification: Purified by Protein A and Protein G affinity chromatography.

Storage: Aliquot and store at -20°C. Avoid repeated freeze/thaw cycles.

Validity: 12 months.

UniProt Primary AC: Q15007 ([UniProt](#), [ExPASy](#))

Molecular Weight: Observed MW: 49 kDa

Buffer: PBS, pH 7.3, with 0.02% sodium azide and 50% glycerol.

Concentration: 2 mg/ml

Note: THIS PRODUCT IS FOR RESEARCH USE ONLY. NOT FOR USE IN DIAGNOSTIC, THERAPEUTIC OR COSMETIC PROCEDURES. NOT FOR HUMAN OR ANIMAL CONSUMPTION.

For Reference Only