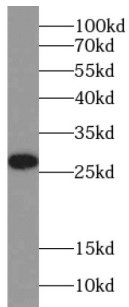
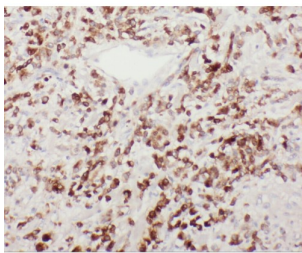


Protein YIPF4 (YIPF4) Antibody

Catalogue No.: abx239564



WB analysis of Jurkat cells, using YIPF4 antibody (1/500 dilution).



IHC-P analysis of human endometrial cancer tissue, using YIPF4 antibody (1/50 dilution).

YIPF4 Antibody is a Rabbit Polyclonal against YIPF4.

Target: Protein YIPF4 (YIPF4)

Clonality: Polyclonal

Reactivity: Human, Mouse, Rat

Tested Applications: ELISA, WB, IHC, IF/ICC

Host: Rabbit

Recommended dilutions: WB: 1/500 - 1/5000, IHC: 1/20 - 1/200, IF/ICC: 1/10 - 1/100. Optimal dilutions/concentrations should be determined by the end user.

Conjugation: Unconjugated

Immunogen: Yip1 domain family, member 4

Isotype: IgG

Form: Liquid

Purity: ≥ 95% (SDS-PAGE)

Datasheet

Version: 3.0.0
Revision date: 01 Oct 2025



Purification:	Purified by immunogen affinity chromatography.
Storage:	Aliquot and store at -20°C. Avoid repeated freeze/thaw cycles.
Validity:	12 months.
UniProt Primary AC:	Q9BSR8 (UniProt , ExPASy)
Gene Symbol:	YIPF4
GeneID:	84272
OMIM:	617534
HGNC:	28145
KEGG:	hsa:84272
Ensembl:	ENSG00000119820
String:	9606.ENSP00000238831
Molecular Weight:	Observed MW: 28 kDa
Buffer:	PBS, pH 7.3, with 0.02% sodium azide and 50% glycerol.
Concentration:	2 mg/ml
Note:	THIS PRODUCT IS FOR RESEARCH USE ONLY. NOT FOR USE IN DIAGNOSTIC, THERAPEUTIC OR COSMETIC PROCEDURES. NOT FOR HUMAN OR ANIMAL CONSUMPTION.

For Reference Only