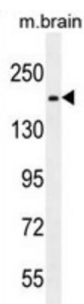


RB1 Inducible Coiled-Coil 1 (RB1CC1) Antibody

Catalogue No.: abx026447



The protein encoded by this gene interacts with signaling pathways to coordinately regulate cell growth, cell proliferation, apoptosis, autophagy, and cell migration. This tumor suppressor also enhances retinoblastoma 1 gene expression in cancer cells. Alternative splicing results in multiple transcript variants encoding distinct isoforms.

Target:	RB1 Inducible Coiled-Coil 1 (RB1CC1)
Clonality:	Polyclonal
Reactivity:	Mouse
Tested Applications:	ELISA, WB
Host:	Rabbit
Recommended dilutions:	WB: 1/1000. Optimal dilutions/concentrations should be determined by the end user.
Conjugation:	Unconjugated
Immunogen:	KLH-conjugated synthetic peptide between 489-515 amino acids from the Central region of human RB1CC1.
Isotype:	IgG
Form:	Liquid
Purification:	Purified through a protein A column, followed by peptide affinity purification.
Storage:	Aliquot and store at -20°C. Avoid repeated freeze/thaw cycles.
UniProt Primary AC:	Q8TDY2 (UniProt , ExPASy)
Gene Symbol:	RB1CC1

Datasheet

Version: 3.0.0

Revision date: 18 Mar 2025



KEGG: hsa:9821

String: [9606.ENSP00000025008](#)

Molecular Weight: Calculated MW: 183 kDa

Buffer: PBS containing 0.09% sodium azide.

Note: THIS PRODUCT IS FOR RESEARCH USE ONLY. NOT FOR USE IN DIAGNOSTIC, THERAPEUTIC OR COSMETIC PROCEDURES. NOT FOR HUMAN OR ANIMAL CONSUMPTION.

For Reference Only