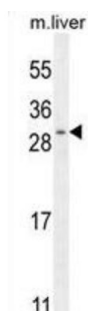
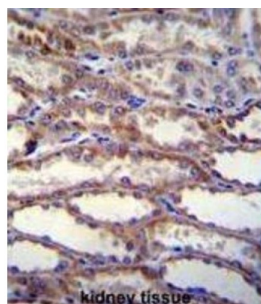


## Protein Shisa-3 Homolog (SHISA3) Antibody

Catalogue No.: abx026451



SHISA3 plays an essential role in the maturation of presomitic mesoderm cells by individual attenuation of both FGF and WNT signaling (By similarity).

<b>Target:</b>	Protein Shisa-3 Homolog (SHISA3)
<b>Clonality:</b>	Polyclonal
<b>Reactivity:</b>	Mouse
<b>Tested Applications:</b>	ELISA, WB, IHC
<b>Host:</b>	Rabbit
<b>Recommended dilutions:</b>	WB: 1/1000, IHC-P: 1/50 - 1/100. Not tested in IHC-F. Optimal dilutions/concentrations should be determined by the end user.
<b>Conjugation:</b>	Unconjugated
<b>Immunogen:</b>	KLH-conjugated synthetic peptide between 158-186 amino acids from the C-terminal region of human SHISA3.
<b>Isotype:</b>	IgG
<b>Form:</b>	Liquid

# Datasheet

Version: 4.0.0  
Revision date: 19 Jul 2025



<b>Purification:</b>	Purified through a protein A column, followed by peptide affinity purification.
<b>Storage:</b>	Aliquot and store at -20°C. Avoid repeated freeze/thaw cycles.
<b>UniProt Primary AC:</b>	A0PJX4 ( <a href="#">UniProt</a> , <a href="#">ExPASy</a> )
<b>Gene Symbol:</b>	SHISA3
<b>KEGG:</b>	hsa:152573
<b>String:</b>	<a href="#">9606.ENSP00000326445</a>
<b>Molecular Weight:</b>	Calculated MW: 25.8 kDa
<b>Buffer:</b>	PBS containing 0.09% sodium azide.
<b>Note:</b>	THIS PRODUCT IS FOR RESEARCH USE ONLY. NOT FOR USE IN DIAGNOSTIC, THERAPEUTIC OR COSMETIC PROCEDURES. NOT FOR HUMAN OR ANIMAL CONSUMPTION.

For Reference Only