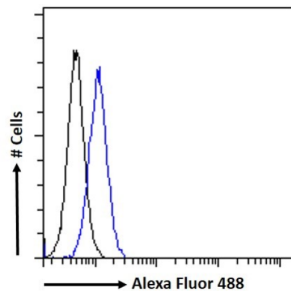
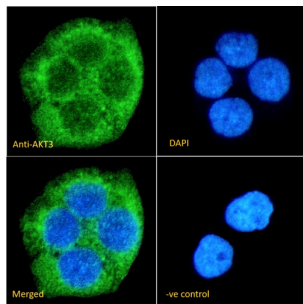


RAC-Gamma Serine/threonine-Protein Kinase (AKT3) Antibody

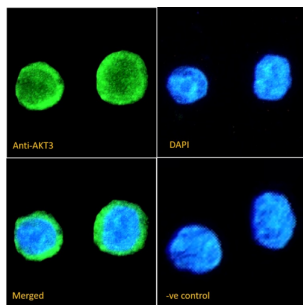
Catalogue No.: abx432305



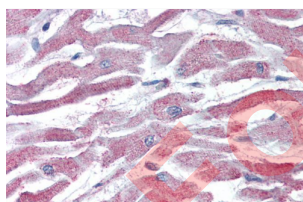
Flow cytometry analysis of HepG2 cells (blue line), using RAC-Gamma Serine/threonine-Protein Kinase (AKT3) Antibody (10 µg/ml) followed by secondary antibody conjugated to Alexa Fluor 488 (1 µg/ml). Non-specific Goat IgG (black line) was used as a negative control.



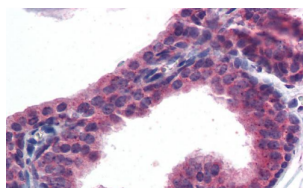
IHC analysis of A431 cells, using RAC-Gamma Serine/threonine-Protein Kinase (AKT3) Antibody (1/50 dilution) followed by Alexa Fluor 488 secondary antibody (1/2000 dilution). DAPI was used for nuclear staining. Goat IgG was used as a negative control.



IF analysis of THP-1 cells using RAC-Gamma Serine/threonine-Protein Kinase (AKT3) Antibody (1/50 dilution), followed by secondary antibody conjugated to Alexa Fluor 488 (1/2000 dilution). DAPI was used for nuclear staining. Goat IgG was used as a negative control.



IHC-P analysis of Human prostate tissue, using RAC-Gamma Serine/threonine-Protein Kinase (AKT3) Antibody (5 µg/ml).

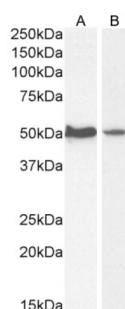


IHC-P analysis of Human heart tissue, using RAC-Gamma Serine/threonine-Protein Kinase (AKT3) Antibody (5 µg/ml).

Datasheet

Version: 2.0.0

Revision date: 20 Aug 2025



WB analysis of HepG2 (A) and HeLa (B) cell lysate, using RAC-Gamma Serine/threonine-Protein Kinase (AKT3) Antibody.

AKT3 Antibody is a Goat Polyclonal antibody against AKT3.

Target: RAC-Gamma Serine/threonine-Protein Kinase (AKT3)

Clonality: Polyclonal

Reactivity: Human, Mouse, Rat

Tested Applications: P-ELISA, WB, IHC, IF/ICC, FCM

Host: Goat

Recommended dilutions: P-ELISA: 1/16000. Optimal dilutions/concentrations should be determined by the end user.

Conjugation: Unconjugated

Immunogen: [abx269596](#) - Internal region: CSPTSQIDNIGEEEM

Isotype: IgG

Form: Liquid

Purification: Purified from goat serum by ammonium sulphate precipitation followed by antigen affinity chromatography using the immunizing peptide.

Storage: Aliquot and store at -20°C. Avoid repeated freeze/thaw cycles.

Gene Symbol: AKT3

GeneID: [10000](#)

NCBI Accession: NP_005456.1, NP_859029.1

Buffer: Tris saline, pH 7.3, containing 0.02% sodium azide and 0.5% bovine serum albumin.

Datasheet

Version: 2.0.0

Revision date: 20 Aug 2025



Concentration: 0.5 mg/ml

Note: THIS PRODUCT IS FOR RESEARCH USE ONLY. NOT FOR USE IN DIAGNOSTIC, THERAPEUTIC OR COSMETIC PROCEDURES. NOT FOR HUMAN OR ANIMAL CONSUMPTION.

For Reference Only