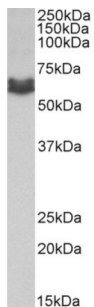
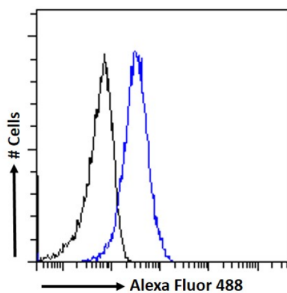


Anti-Mullerian Hormone Receptor Type 2 (AMHR2) Antibody

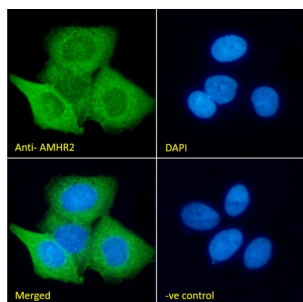
Catalogue No.: abx432323



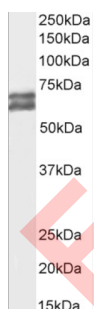
WB analysis using abx432323 (1 µg/ml) of MDA-MB-231 lysate (35 µg protein in RIPA buffer). Primary incubation was 1 hour. Detected by chemiluminescence.



Flow cytometry analysis using abx432323 of MCF7 cells (blue line) (10 µg/ml) followed by secondary antibody conjugated to Alexa Fluor 488 (1 µg/ml). Non-specific Goat IgG was used as a control (black line) followed by secondary antibody conjugated to Alexa Fluor 488.



IF analysis using abx432323 of MCF7 cells (10 µg/ml) followed by secondary antibody conjugated to Alexa Fluor 488 (2 µg/ml). DAPI was used as a nuclear stain. Non-specific goat IgG was used as a negative control (10 µg/ml) followed by secondary antibody conjugated to Alexa Fluor 488 (2 µg/ml).



WB analysis using abx432323 of MCF7 cell lysate (1 µg/ml) (35µg protein in RIPA buffer). Detected by chemiluminescence.

AMHR2 Antibody is a Goat Polyclonal antibody against AMHR2.

Target: Anti-Mullerian Hormone Receptor Type 2 (AMHR2)

Clonality: Polyclonal

Reactivity: Human

Datasheet

Version: 2.0.0
Revision date: 20 Aug 2025



Tested Applications: P-ELISA, WB, IF/ICC, FCM

Host: Goat

Recommended dilutions: P-ELISA: 1/128000. Optimal dilutions/concentrations should be determined by the end user.

Conjugation: Unconjugated

Immunogen: [abx617279](#) - Internal region, 88-99 AA: ESLHCDPSPRAH

Isotype: IgG

Form: Liquid

Purification: Purified from goat serum by ammonium sulphate precipitation followed by antigen affinity chromatography using the immunizing peptide.

Storage: Aliquot and store at -20°C. Avoid repeated freeze/thaw cycles.

Gene Symbol: AMHR2

GeneID: [269](#)

NCBI Accession: NP_065434.1, NP_001158162.1, NP_001158163.1

Buffer: Tris saline, pH 7.3, containing 0.02% sodium azide and 0.5% bovine serum albumin.

Concentration: 0.5 mg/ml

Note: THIS PRODUCT IS FOR RESEARCH USE ONLY. NOT FOR USE IN DIAGNOSTIC, THERAPEUTIC OR COSMETIC PROCEDURES. NOT FOR HUMAN OR ANIMAL CONSUMPTION.