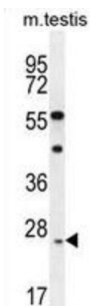
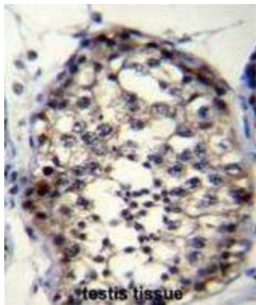


Ropporin-1-Like Protein (ROPN1L) Antibody

Catalogue No.: abx026470



The protein encoded by this gene is a sperm protein, which interacts with A-kinase anchoring protein, AKAP3, through the amphipathic helix region of AKAP3. Type II regulatory subunit of cAMP-dependent protein kinase (PKARII) also binds to this helix domain of AKAP3, which allows PKARII to be targeted to specific subcellular compartments. It is suggested that sperm contains several proteins that bind to AKAPs in a manner similar to PKARII, and this encoded protein may be one of them.

Target:	Ropporin-1-Like Protein (ROPN1L)
Clonality:	Polyclonal
Reactivity:	Mouse
Tested Applications:	ELISA, WB, IHC
Host:	Rabbit
Recommended dilutions:	WB: 1/1000, IHC-P: 1/10 - 1/50. Not tested in IHC-F. Optimal dilutions/concentrations should be determined by the end user.
Conjugation:	Unconjugated
Immunogen:	KLH-conjugated synthetic peptide between 32-60 amino acids from the N-terminal region of human ROPN1L.
Isotype:	IgG

Datasheet

Version: 4.0.0

Revision date: 01 Oct 2025



Form:	Liquid
Purification:	Purified through a protein A column, followed by peptide affinity purification.
Storage:	Aliquot and store at -20°C. Avoid repeated freeze/thaw cycles.
UniProt Primary AC:	Q96C74 (UniProt , ExPASy)
KEGG:	hsa:83853
String:	9606.ENSP00000421405
Molecular Weight:	Calculated MW: 26.1 kDa
Buffer:	PBS containing 0.09% sodium azide.
Specificity:	Predicted to react with Cow and Monkey ROPN1L.
Note:	THIS PRODUCT IS FOR RESEARCH USE ONLY. NOT FOR USE IN DIAGNOSTIC, THERAPEUTIC OR COSMETIC PROCEDURES. NOT FOR HUMAN OR ANIMAL CONSUMPTION.

For Reference Only