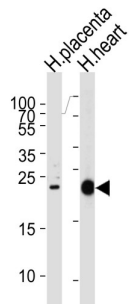
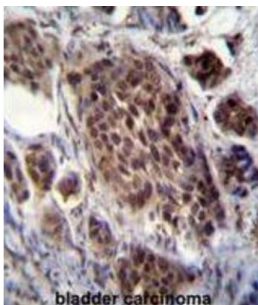


# Frequently Rearranged In Advanced T-Cell Lymphomas 2 (FRAT2) Antibody

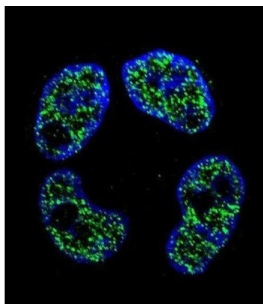
Catalogue No.: abx026473



WB analysis of human placenta and human heart tissues, using FRAT2 Antibody (1/1000 dilution).



IHC-P analysis of human bladder carcinoma, with DAB staining.



Confocal IF analysis of ZR-75-1 cells, using FRAT2 Antibody and AF488-conjugated Goat anti-Rabbit IgG (green). DAPI was used for nuclear staining (blue).

The protein encoded by this intronless gene belongs to the GSK-3-binding protein family. Studies show that this protein plays a role as a positive regulator of the WNT signaling pathway. It may be upregulated in tumor progression.

**Target:** Frequently Rearranged In Advanced T-Cell Lymphomas 2 (FRAT2)

**Clonality:** Polyclonal

**Reactivity:** Human

**Tested Applications:** ELISA, WB, IHC, IF/ICC

**Host:** Rabbit

**Recommended dilutions:** WB: 1/1000, IHC-P: 1/10 - 1/50, IF/ICC: 1/10 - 1/50. Not tested in IHC-F. Optimal dilutions/concentrations should be determined by the end user.

# Datasheet

Version: 3.0.0  
Revision date: 01 Jun 2025



Conjugation:	Unconjugated
Immunogen:	KLH-conjugated synthetic peptide between 203-230 amino acids from the C-terminal region of human FRAT2.
Isotype:	IgG
Form:	Liquid
Purification:	Purified through a protein A column, followed by peptide affinity purification.
Storage:	Aliquot and store at -20°C. Avoid repeated freeze/thaw cycles.
UniProt Primary AC:	O75474 ( <a href="#">UniProt</a> , <a href="#">ExPASy</a> )
Gene Symbol:	FRAT2
GeneID:	<a href="#">23401</a>
KEGG:	hsa:23401
String:	<a href="#">9606.ENSP00000360058</a>
Molecular Weight:	Calculated MW: 24.1 kDa
Buffer:	PBS containing 0.09% sodium azide.
Concentration:	0.5 mg/ml
Note:	THIS PRODUCT IS FOR RESEARCH USE ONLY. NOT FOR USE IN DIAGNOSTIC, THERAPEUTIC OR COSMETIC PROCEDURES. NOT FOR HUMAN OR ANIMAL CONSUMPTION.