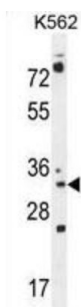
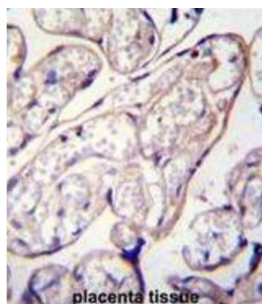


## Pyrroline-5-Carboxylate Reductase Family Member 2 (PYCR2) Antibody

Catalogue No.: abx026475



PYCR2 belongs to the pyrroline-5-carboxylate reductase family. Pyrroline-5-carboxylate reductase catalyzes the the NAD (P) H-dependent conversion of proline to pyrroline-5-carboxylate.

**Target:** Pyrroline-5-Carboxylate Reductase Family Member 2 (PYCR2)

**Clonality:** Polyclonal

**Reactivity:** Human

**Tested Applications:** ELISA, WB, IHC

**Host:** Rabbit

**Recommended dilutions:** WB: 1/1000, IHC-P: 1/10 - 1/50. Not tested in IHC-F. Optimal dilutions/concentrations should be determined by the end user.

**Conjugation:** Unconjugated

**Immunogen:** KLH-conjugated synthetic peptide between 89-116 amino acids from the Central region of human PYCR2.

**Isotype:** IgG

**Form:** Liquid

# Datasheet

Version: 3.0.0  
Revision date: 29 Mar 2025



<b>Purification:</b>	Purified through a protein A column, followed by peptide affinity purification.
<b>Storage:</b>	Aliquot and store at -20°C. Avoid repeated freeze/thaw cycles.
<b>UniProt Primary AC:</b>	Q96C36 ( <a href="#">UniProt</a> , <a href="#">ExPASy</a> )
<b>KEGG:</b>	hsa:29920
<b>String:</b>	<a href="#">9606.ENSP00000342502</a>
<b>Molecular Weight:</b>	Calculated MW: 33.6 kDa
<b>Buffer:</b>	PBS containing 0.09% sodium azide.
<b>Specificity:</b>	Predicted to react with Mouse, Rat, Cow and Monkey PYCR2.
<b>Note:</b>	THIS PRODUCT IS FOR RESEARCH USE ONLY. NOT FOR USE IN DIAGNOSTIC, THERAPEUTIC OR COSMETIC PROCEDURES. NOT FOR HUMAN OR ANIMAL CONSUMPTION.

For Reference Only