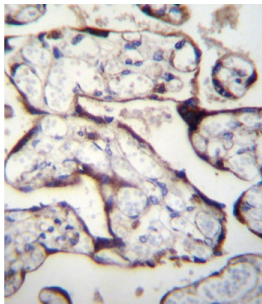
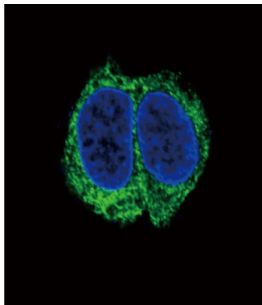


Transforming Growth Factor Beta Receptor 2 (TGFB2) Antibody

Catalogue No.: abx026476



This gene encodes a member of the Ser/Thr protein kinase family and the TGFB receptor subfamily. The encoded protein is a transmembrane protein that has a protein kinase domain, forms a heterodimeric complex with another receptor protein, and binds TGF-beta. This receptor/ligand complex phosphorylates proteins, which then enter the nucleus and regulate the transcription of a subset of genes related to cell proliferation. Mutations in this gene have been associated with Marfan Syndrome, Loeys-Deitz Aortic Aneurysm Syndrome, and the development of various types of tumors. Alternatively spliced transcript variants encoding different isoforms have been characterized.

Target: Transforming Growth Factor Beta Receptor 2 (TGFB2)

Clonality: Polyclonal

Reactivity: Human, Mouse

Tested Applications: ELISA, WB, IHC, IF/ICC

Host: Rabbit

Datasheet

Version: 3.0.0
Revision date: 18 Mar 2025



Recommended dilutions: WB: 1/1000, IHC-P: 1/25, IF/ICC: 1/10 - 1/50. Not tested in IHC-F. Optimal dilutions/concentrations should be determined by the end user.

Conjugation: Unconjugated

Immunogen: KLH-conjugated synthetic peptide between 13-40 amino acids from the N-terminal region of human TGFBR2.

Isotype: IgG

Form: Liquid

Purification: Purified through a protein A column, followed by peptide affinity purification.

Storage: Aliquot and store at -20°C. Avoid repeated freeze/thaw cycles.

UniProt Primary AC: P37173 ([UniProt](#), [ExPASy](#))

Gene Symbol: TGFBR2

KEGG: hsa:7048

String: [9606.ENSP00000351905](#)

Molecular Weight: Calculated MW: 64.6 kDa

Buffer: PBS containing 0.09% sodium azide.

Note: THIS PRODUCT IS FOR RESEARCH USE ONLY. NOT FOR USE IN DIAGNOSTIC, THERAPEUTIC OR COSMETIC PROCEDURES. NOT FOR HUMAN OR ANIMAL CONSUMPTION.