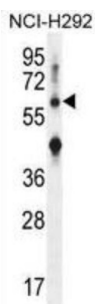
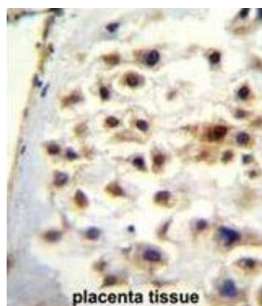


Collagen Type XIII Alpha 1 (COL13A1) Antibody

Catalogue No.: abx026477



Western blot analysis of NCI-H292 cell lysates (35 µg per lane) using Collagen Type XIII Alpha 1 Antibody.



Immunohistochemistry analysis of paraffin-embedded Human placental tissue using Collagen Type XIII Alpha 1 Antibody followed by HRP-conjugated secondary antibody and DAB staining.

Collagen Type XIII Alpha 1 (COL13A1) Antibody is a rabbit polyclonal antibody for the detection of COL13A1. This target is involved in cell-matrix and cell-cell adhesion interactions that are required for normal development. This target has been implicated in the linkage between muscle fiber and basement membrane.

Target: Collagen Type XIII Alpha 1 (COL13A1)

Clonality: Polyclonal

Reactivity: Human

Tested Applications: ELISA, WB, IHC

Host: Rabbit

Recommended dilutions: WB: 1/1000, IHC-P: 1/10 - 1/50. Not tested in IHC-F. Optimal dilutions/concentrations should be determined by the end user.

Conjugation: Unconjugated

Immunogen: KLH-conjugated synthetic peptide between 53-81 amino acids from the N-terminal region of Human COL13A1.

Isotype: IgG

Form: Liquid

Datasheet

Version: 4.0.0
Revision date: 25 Jun 2025



Purification:	Purified through a protein A column, followed by peptide affinity purification.
Storage:	Aliquot and store at -20°C. Avoid repeated freeze/thaw cycles.
UniProt Primary AC:	Q5TAT6 (UniProt , ExPASy)
KEGG:	hsa:1305
String:	9606.ENSP00000381949
Buffer:	PBS containing 0.09% sodium azide.
Specificity:	Predicted to react with Mouse COL13A1.
Concentration:	0.5 mg/ml
Note:	THIS PRODUCT IS FOR RESEARCH USE ONLY. NOT FOR USE IN DIAGNOSTIC, THERAPEUTIC OR COSMETIC PROCEDURES. NOT FOR HUMAN OR ANIMAL CONSUMPTION.

For Reference Only