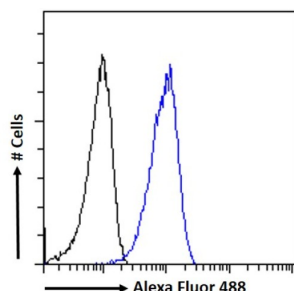
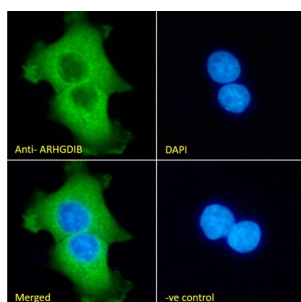


## Rho GDP-Dissociation Inhibitor 2 (ARHGDIB) Antibody

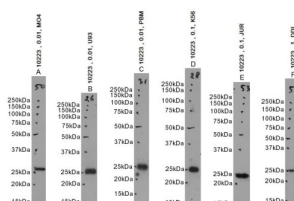
Catalogue No.: abx432363



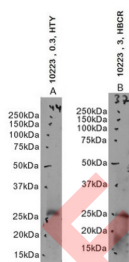
Flow cytometry analysis of A431 cells (blue) using Rho GDP-Dissociation Inhibitor 2 (ARHGDIB) Antibody (10 µg/ml) with a secondary antibody conjugated to AF488 (1 µg/ml). Non-specific Goat IgG antibody with a secondary antibody conjugated to AF488 (black) was used as a negative control.



IF analysis of A431 cells, using Rho GDP-Dissociation Inhibitor 2 (ARHGDIB) Antibody (10 µg/ml) with a secondary antibody conjugated to AF488 (2 µg/ml), showing cytoplasmic staining. Blue DAPI was used as a nuclear stain. Non specific Goat IgG antibody with a secondary antibody conjugated to AF488 was used as a negative control.



WB analysis. Images A, B, C: MOLT4, U937, PBM cell lysates (0.01 µg/ml). Images D, E: K562, Jurkat cell lysate (0.1 µg/ml). Image F: Daudi cell lysate (1 µg/ml). Rho GDP-Dissociation Inhibitor 2 (ARHGDIB) Antibody



WB analysis of A: Human Thymus lysate using Rho GDP-Dissociation Inhibitor 2 (ARHGDIB) Antibody (0.3 µg/ml). B: Human Cerebellum lysate (3 µg/ml).

ARHGDIB Antibody is a Goat Polyclonal antibody against ARHGDIB.

**Target:** Rho GDP-Dissociation Inhibitor 2 (ARHGDIB)

**Clonality:** Polyclonal

**Reactivity:** Human

# Datasheet

Version: 3.0.0  
Revision date: 06 Sep 2025



**Tested Applications:** P-ELISA, WB, IF/ICC, FCM

**Host:** Goat

**Recommended dilutions:** P-ELISA: 1/4000. Optimal dilutions/concentrations should be determined by the end user.

**Conjugation:** Unconjugated

**Immunogen:** [abx616325](#) - N-Terminus: TEKAPEPHVE-C

**Isotype:** IgG

**Form:** Liquid

**Purification:** Purified from goat serum by ammonium sulphate precipitation followed by antigen affinity chromatography using the immunizing peptide.

**Storage:** Aliquot and store at -20°C. Avoid repeated freeze/thaw cycles.

**Gene Symbol:** ARHGDIB

**GeneID:** [397](#)

**NCBI Accession:** NP\_001166.3

**Buffer:** Tris saline, pH 7.3, containing 0.02% sodium azide and 0.5% bovine serum albumin.

**Concentration:** 0.5 mg/ml

**Note:** THIS PRODUCT IS FOR RESEARCH USE ONLY. NOT FOR USE IN DIAGNOSTIC, THERAPEUTIC OR COSMETIC PROCEDURES. NOT FOR HUMAN OR ANIMAL CONSUMPTION.