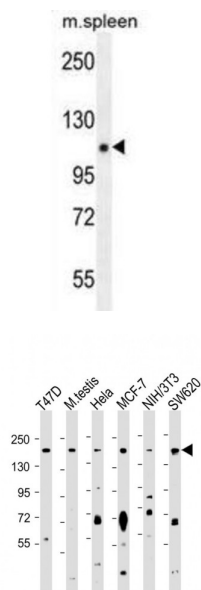
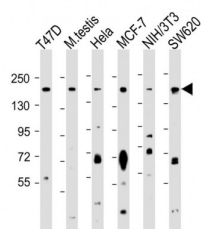


Proline-, Glutamic Acid- And Leucine-Rich Protein 1 (PELP1) Antibody

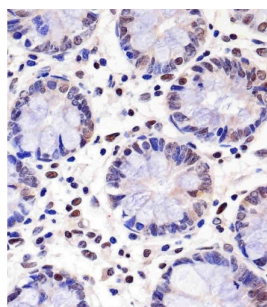
Catalogue No.: abx026482



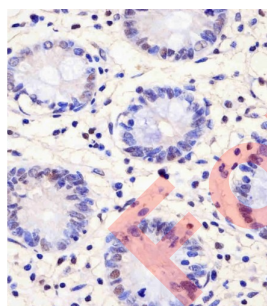
WB analysis of mouse spleen tissue lysates (35 µg/lane).



WB analysis of various cell and tissue lysates (20 µg/lane), using PELP1 antibody (1/1000 dilution).



IHC-P analysis of human colon tissue. The sample was fixed with formaldehyde and blocked with 3% BSA for 30 min at room temperature. Heat-mediated antigen retrieval was carried out with citrate buffer (pH 6). Samples were incubated with PELP1 primary antibody (1/25 dilution) for 1 hour at 37 °C.



IHC-P analysis of human colon tissue. The sample was fixed with formaldehyde and blocked with 3% BSA for 30 min at room temperature. Heat-mediated antigen retrieval was carried out with citrate buffer (pH 6). Samples were incubated with PELP1 primary antibody (1/25 dilution) for 1 hour at 37 °C.

PELP1 is a coactivator of estrogen receptor (ESR1) mediated transcription and a corepressor of other nuclear hormone receptors and sequence-specific transcription factors.

Target: Proline-, Glutamic Acid- And Leucine-Rich Protein 1 (PELP1)

Clonality: Polyclonal

Datasheet

Version: 4.0.0
Revision date: 16 Jul 2025



Reactivity:	Human, Mouse
Tested Applications:	ELISA, WB, IHC
Host:	Rabbit
Recommended dilutions:	WB: 1/1000, IHC-P: 1/25. Not tested in IHC-F. Optimal dilutions/concentrations should be determined by the end user.
Conjugation:	Unconjugated
Immunogen:	KLH-conjugated synthetic peptide between 744-771 amino acids from the central region of human PELP1.
Isotype:	IgG
Form:	Liquid
Purification:	Purified by Protein A affinity chromatography, followed by peptide affinity purification.
Storage:	Aliquot and store at -20°C. Avoid repeated freeze/thaw cycles.
UniProt Primary AC:	Q8IZL8 (UniProt , ExPASy)
Gene Symbol:	PELP1
KEGG:	hsa:27043
String:	9606.ENSP00000301396
Molecular Weight:	Calculated MW: 120 kDa
Buffer:	PBS containing 0.09% sodium azide.
Specificity:	Predicted to react with Rat PELP1.
Note:	THIS PRODUCT IS FOR RESEARCH USE ONLY. NOT FOR USE IN DIAGNOSTIC, THERAPEUTIC OR COSMETIC PROCEDURES. NOT FOR HUMAN OR ANIMAL CONSUMPTION.