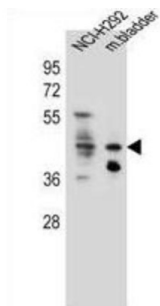
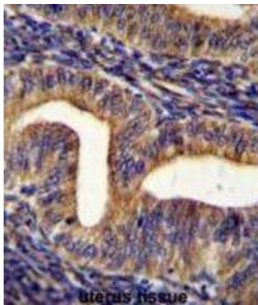


Growth Hormone Secretagogue Receptor (GHSR) Antibody

Catalogue No.: abx026483



This gene encodes a member of the G-protein coupled receptor family. The encoded protein may play a role in energy homeostasis and regulation of body weight. Two identified transcript variants are expressed in several tissues and are evolutionary conserved in fish and swine. One transcript, 1a, excises an intron and encodes the functional protein; this protein is the receptor for the Ghrelin ligand and defines a neuroendocrine pathway for growth hormone release. The second transcript (1b) retains the intron and does not function as a receptor for Ghrelin; however, it may function to attenuate activity of isoform 1a. Mutations in this gene are associated with autosomal idiopathic short stature.

Target:	Growth Hormone Secretagogue Receptor (GHSR)
Clonality:	Polyclonal
Reactivity:	Human, Mouse
Tested Applications:	ELISA, WB, IHC
Host:	Rabbit
Recommended dilutions:	WB: 1/1000, IHC-P: 1/50 - 1/100. Not tested in IHC-F. Optimal dilutions/concentrations should be determined by the end user.
Conjugation:	Unconjugated
Immunogen:	KLH-conjugated synthetic peptide between 326-357 amino acids from the C-terminal region of human GHSR.
Isotype:	IgG

Datasheet

Version: 4.0.0
Revision date: 09 Oct 2025



Form:	Liquid
Purification:	Purified through a protein A column, followed by peptide affinity purification.
Storage:	Aliquot and store at -20°C. Avoid repeated freeze/thaw cycles.
UniProt Primary AC:	Q92847 (UniProt , ExPASy)
KEGG:	hsa:2693
String:	9606.ENSP00000241256
Molecular Weight:	Calculated MW: 41.3 kDa
Buffer:	PBS containing 0.09% sodium azide.
Specificity:	Predicted to react with Pig and Rabbit GHSR.
Note:	THIS PRODUCT IS FOR RESEARCH USE ONLY. NOT FOR USE IN DIAGNOSTIC, THERAPEUTIC OR COSMETIC PROCEDURES. NOT FOR HUMAN OR ANIMAL CONSUMPTION.

For Reference Only