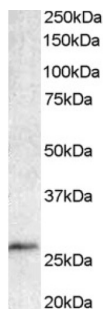
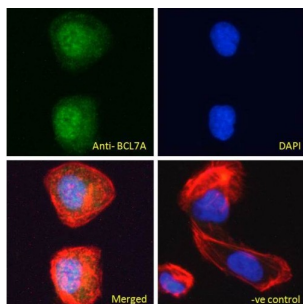


B-Cell CLL/lymphoma 7 Protein Family Member A (BCL7A) Antibody

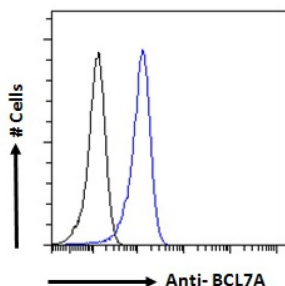
Catalogue No.: abx432206



abx432206 staining (1 µg/ml) of Human Lymph Node lysate (35 µg protein in RIPA buffer). Detected by chemiluminescence.



abx432206 Immunofluorescence analysis of paraformaldehyde fixed U2OS cells, permeabilized with 0.15% Triton. Primary incubation 1hr (10 µg/ml) followed by AF488 secondary antibody (2 µg/ml), showing nuclear staining. Actin filaments were stained with phalloidin (red) and the nuclear stain is DAPI (blue). Negative control: Unimmunized goat IgG (10 µg/ml) followed by AF488 secondary antibody (2 µg/ml).



Flow cytometry analysis of paraformaldehyde fixed Daudi cells (blue line), permeabilized with 0.5% Triton. Primary incubation 1hr (10 µg/ml) followed by AF488 secondary antibody (1 µg/ml). IgG control: Unimmunized goat IgG (black line) followed by AF488 secondary antibody.

BCL7A Antibody is a Goat Polyclonal antibody against BCL7A.

Target: B-Cell CLL/lymphoma 7 Protein Family Member A (BCL7A)

Clonality: Polyclonal

Reactivity: Human

Tested Applications: P-ELISA, WB, IF/ICC, FCM

Host: Goat

Recommended dilutions: P-ELISA: 1/4000. Optimal dilutions/concentrations should be determined by the end user.

Conjugation: Unconjugated

Datasheet

Version: 1.0.0
Revision date: 05 Jun 2025



Immunogen:	abx269004 - C-Terminus: C-MKLEASQQNSEEM
Isotype:	IgG
Form:	Liquid
Purification:	Purified from goat serum by ammonium sulphate precipitation followed by antigen affinity chromatography using the immunizing peptide.
Storage:	Aliquot and store at -20°C. Avoid repeated freeze/thaw cycles.
Gene Symbol:	BCL7A
GeneID:	605 77045
NCBI Accession:	NP_066273.1, NP_001019979.1
Buffer:	Tris saline, pH 7.3, containing 0.02% sodium azide and 0.5% bovine serum albumin.
Concentration:	0.5 mg/ml
Note:	THIS PRODUCT IS FOR RESEARCH USE ONLY. NOT FOR USE IN DIAGNOSTIC, THERAPEUTIC OR COSMETIC PROCEDURES. NOT FOR HUMAN OR ANIMAL CONSUMPTION.

For Reference Only