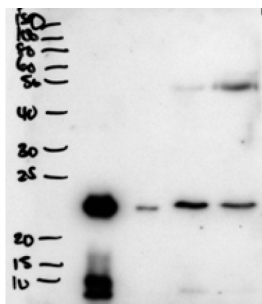


BPI Fold-Containing Family A Member 1 / PLUNC (BPIFA1) Antibody

Catalogue No.: abx430704



abx430704 (2 µg/ml) staining of secretions from Human primary airway cells in culture (lanes 1 and 2), and in Human Bronchoalveolar Lavage fluid (lanes 3 and 4). Data obtained from Dr. C Bingle, AURM, University of Sheffield, UK. Primary incubation was 1 hour. Detected by chemiluminescence.

BPIFA1 Antibody is a Goat Polyclonal antibody against BPIFA1.

Target: BPI Fold-Containing Family A Member 1 / PLUNC (BPIFA1)

Clonality: Polyclonal

Reactivity: Human

Tested Applications: P-ELISA, WB

Host: Goat

Recommended dilutions: P-ELISA: 1/64000. Optimal dilutions/concentrations should be determined by the end user.

Conjugation: Unconjugated

Immunogen: [abx616796](#) - C-Terminus: C-NEVLRGLDITLVHD

Isotype: IgG

Form: Liquid

Purification: Purified from goat serum by ammonium sulphate precipitation followed by antigen affinity chromatography using the immunizing peptide.

Storage: Aliquot and store at -20°C. Avoid repeated freeze/thaw cycles.

Gene Symbol: BPIFA1

GeneID: [51297](#)

NCBI Accession: NP_057667.1

Datasheet

Version: 1.0.0

Revision date: 23 Jun 2025



Buffer: Tris saline, pH 7.3, containing 0.02% sodium azide and 0.5% bovine serum albumin.

Concentration: 0.5 mg/ml

Note: THIS PRODUCT IS FOR RESEARCH USE ONLY. NOT FOR USE IN DIAGNOSTIC, THERAPEUTIC OR COSMETIC PROCEDURES. NOT FOR HUMAN OR ANIMAL CONSUMPTION.

For Reference Only