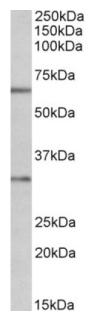
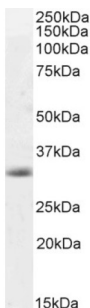


Caspase 3 (CASP3) Antibody

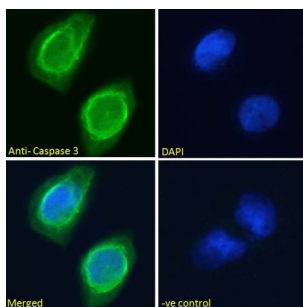
Catalogue No.: abx432452



abx432452 (1 µg/ml) staining of MOLT4 lysate (35 µg protein in RIPA buffer). Primary incubation was 1 hour. Detected by chemiluminescence.



abx432452 (0.5 µg/ml) staining of Mouse Liver lysate (35 µg protein in RIPA buffer). Detected by chemiluminescence.



abx432452 Immunofluorescence analysis of paraformaldehyde fixed U251 cells, permeabilized with 0.15% Triton. Primary incubation 1hr (10 µg/ml) followed by AF488 secondary antibody (2 µg/ml), showing cytoplasmic staining. The nuclear stain is DAPI (blue). Negative control: Unimmunized goat IgG (10 µg/ml) followed by AF488 secondary antibody (2 µg/ml).

Caspase 3 Antibody is a Goat Polyclonal antibody against Caspase 3.

Target: Caspase 3 (CASP3)

Clonality: Polyclonal

Reactivity: Human, Mouse, Rat

Tested Applications: P-ELISA, WB, IF/ICC

Host: Goat

Recommended dilutions: P-ELISA: 1/32000, WB: 0.5-1 µg/ml, IF/ICC: 10 µg/ml. Optimal dilutions/concentrations should be determined by the end user.

Conjugation: Unconjugated

Datasheet

Version: 5.0.0
Revision date: 12 Aug 2025



Immunogen:	abx269924 - Peptide with sequence C-RDVSKEDHSKRS (internal region of CASP3).
Purification:	Purified from goat serum by ammonium sulphate precipitation followed by antigen affinity chromatography using the immunizing peptide.
Storage:	Aliquot and store at -20°C. Avoid repeated freeze/thaw cycles.
Gene Symbol:	CASP3
GeneID:	836
NCBI Accession:	NP_004337.2, NP_116786.1
Buffer:	Tris saline, pH 7.3, containing 0.02% sodium azide and 0.5% bovine serum albumin.
Specificity:	Predicted to react with Dog CASP3.
Concentration:	0.5 mg/ml
Note:	THIS PRODUCT IS FOR RESEARCH USE ONLY. NOT FOR USE IN DIAGNOSTIC, THERAPEUTIC OR COSMETIC PROCEDURES. NOT FOR HUMAN OR ANIMAL CONSUMPTION.