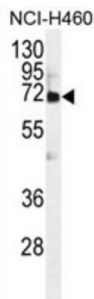


Von Willebrand Factor A Domain Containing Protein 2 (VWA2) Antibody

Catalogue No.: abx026510



VWA2, also named as AMACO and CCSP2, is a novel candidate serological marker of colon neoplasia. VWA2 is found in the media of various established cell lines of both fibroblast and epithelial origin.

Target:	Von Willebrand Factor A Domain Containing Protein 2 (VWA2)
Clonality:	Polyclonal
Reactivity:	Human
Tested Applications:	ELISA, WB
Host:	Rabbit
Recommended dilutions:	WB: 1/1000. Optimal dilutions/concentrations should be determined by the end user.
Conjugation:	Unconjugated
Immunogen:	KLH-conjugated synthetic peptide between 44-72 amino acids from the N-terminal region of human VWA2.
Isotype:	IgG
Form:	Liquid
Purification:	Purified through a protein A column, followed by peptide affinity purification.
Storage:	Aliquot and store at -20°C. Avoid repeated freeze/thaw cycles.
UniProt Primary AC:	Q5GFL6 (UniProt , ExPASy)
KEGG:	hsa:340706

Datasheet

Version: 3.0.0

Revision date: 22 Aug 2025



String: [9606.ENSF00000376708](#)

Molecular Weight: Calculated MW: 82 kDa

Buffer: PBS containing 0.09% sodium azide.

Note: THIS PRODUCT IS FOR RESEARCH USE ONLY. NOT FOR USE IN DIAGNOSTIC, THERAPEUTIC OR COSMETIC PROCEDURES. NOT FOR HUMAN OR ANIMAL CONSUMPTION.

For Reference Only