

Centaurin-Beta-2 (CENTB2) Antibody

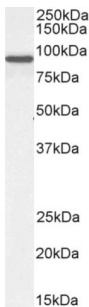
Catalogue No.:abx430694



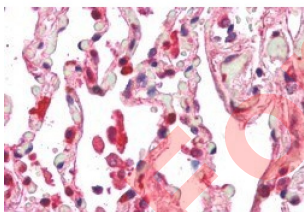
abx430694 (1 µg/ml) staining of MOLT4 lysate (35 µg protein in RIPA buffer). Primary incubation was 1 hour. Detected by chemiluminescence.



abx430694 (0.3 µg/ml) staining of Mouse (A) and Rat (B) Lung lysate (35 µg protein in RIPA buffer). Primary incubation was 1 hour. Detected by chemiluminescence.



abx430694 (0.3 µg/ml) staining of NIH3T3 cell lysate (35 µg protein in RIPA buffer). Primary incubation was 1 hour. Detected by chemiluminescence.



abx430694 (5 µg/ml staining of paraffin embedded Human Lung. Steamed antigen retrieval with citrate buffer pH 6, AP-staining.

CENTB2 Antibody is a Goat Polyclonal antibody against CENTB2.

Target: Centaurin-Beta-2 (CENTB2)

Clonality: Polyclonal

Reactivity: Human, Mouse, Rat

Datasheet

Version: 1.0.0
Revision date: 13 Oct 2025



Tested Applications: P-ELISA, WB, IHC

Host: Goat

Recommended dilutions: P-ELISA: 1/32000. Optimal dilutions/concentrations should be determined by the end user.

Conjugation: Unconjugated

Immunogen: [abx269414](#) - C-Terminus: C-EKLNRFQQDSQKF

Isotype: IgG

Form: Liquid

Purification: Purified from goat serum by ammonium sulphate precipitation followed by antigen affinity chromatography using the immunizing peptide.

Storage: Aliquot and store at -20°C. Avoid repeated freeze/thaw cycles.

Gene Symbol: ACAP2

GeneID: [23527](#) [78618](#)

NCBI Accession: NP_036419.3

Buffer: Tris saline, pH 7.3, containing 0.02% sodium azide and 0.5% bovine serum albumin.

Concentration: 0.5 mg/ml

Note: THIS PRODUCT IS FOR RESEARCH USE ONLY. NOT FOR USE IN DIAGNOSTIC, THERAPEUTIC OR COSMETIC PROCEDURES. NOT FOR HUMAN OR ANIMAL CONSUMPTION.