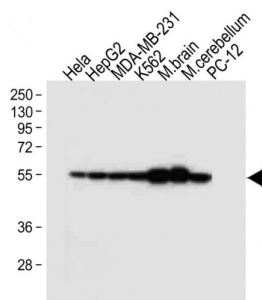
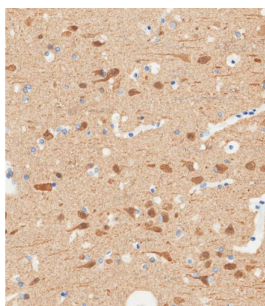


Tubulin Beta 2B (TUBB2B) Antibody

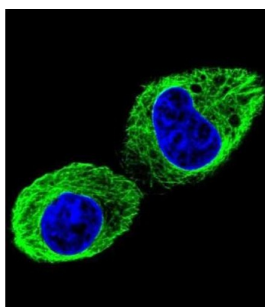
Catalogue No.: abx026514



WB analysis of HeLa (Lane 1), HepG2 (Lane 2), MDA-MB-231 (Lane 3), K562 (Lane 4) cell lysates, Mouse brain (Lane 5), Mouse cerebellum (Lane 6) tissue lysates and PC-12 (Lane 7) cell lysate (20 µg/lane), using TUBB2B Antibody (1/4000 dilution) followed by a Goat Anti-Rabbit IgG H+L antibody, conjugated to HRP (1/10000 dilution). Calculated MW: 50 kDa



IHC-P analysis of Human brain tissue with DAB staining, using TUBB2B Antibody (1/2000 dilution) followed by an undiluted CRF Anti-Polyvalent HRP Polymer antibody conjugated to Biotin.



IF analysis of HepG2 cells using TUBB2B Antibody followed by a Goat Anti-Rabbit IgG antibody conjugated to AF488 (green). DAPI was used as a nuclear stain (blue).

Tubulin Beta 2B (TUBB2B) Antibody is a rabbit polyclonal antibody for the detection of TUBB2. The protein encoded by this gene is a beta isoform of tubulin, which binds GTP and is a major component of microtubules. This gene is highly similar to TUBB2A and TUBB2C. Defects in this gene are a cause of asymmetric polymicrogyria.

Target: Tubulin Beta 2B (TUBB2B)

Clonality: Polyclonal

Reactivity: Human, Mouse, Rat

Tested Applications: ELISA, WB, IHC, IF

Host: Rabbit

Recommended dilutions: WB: 1/4000, IHC-P: 1/2000, IF: 1/10 - 1/50. Not tested in IHC-F. Optimal dilutions/concentrations should be determined by the end user.

Datasheet

Version: 5.0.0
Revision date: 06 Sep 2025



Conjugation:	Unconjugated
Immunogen:	KLH-conjugated synthetic peptide between 12-39 AA from the N-terminal region of Human TUBB2B.
Isotype:	IgG
Form:	Liquid
Purification:	Purified through a protein A column, followed by peptide affinity purification.
Storage:	Aliquot and store at 2-8°C for up to 2 weeks, or at -20°C for long term storage. Avoid repeated freeze/thaw cycles.
UniProt Primary AC:	Q9BVA1 (UniProt , ExPASy)
Gene Symbol:	TUBB2B
String:	9606.ENSP00000259818
Molecular Weight:	Calculated MW: 50 kDa
Buffer:	PBS containing 0.09% sodium azide.
Specificity:	Predicted to react with Cow, Pig, Chicken, Monkey and Xenopus TUBB2B.
Concentration:	0.5 mg/ml
Note:	THIS PRODUCT IS FOR RESEARCH USE ONLY. NOT FOR USE IN DIAGNOSTIC, THERAPEUTIC OR COSMETIC PROCEDURES. NOT FOR HUMAN OR ANIMAL CONSUMPTION.