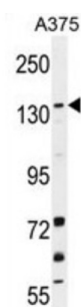


Jumonji Domain-Containing Protein 2B (JMJD2B) Antibody

Catalogue No.: abx026520



KDM4B is a histone demethylase that specifically demethylates 'Lys-9' of histone H3, thereby playing a role in histone code. It does not demethylate histone H3 'Lys-4', H3 'Lys-27', H3 'Lys-36' nor H4 'Lys-20' and only able to demethylate trimethylated H3 'Lys-9', with a weaker activity than KDM4A, KDM4C and KDM4D. Demethylation of Lys residue generates formaldehyde and succinate.

Target:	Jumonji Domain-Containing Protein 2B (JMJD2B)
Clonality:	Polyclonal
Reactivity:	Human
Tested Applications:	ELISA, WB
Host:	Rabbit
Recommended dilutions:	WB: 1/1000. Optimal dilutions/concentrations should be determined by the end user.
Conjugation:	Unconjugated
Immunogen:	KLH-conjugated synthetic peptide between 428-459 amino acids from the N-terminal region of human JMJD2B.
Isotype:	IgG
Form:	Liquid
Purification:	Purified through a protein A column, followed by peptide affinity purification.
Storage:	Aliquot and store at -20°C. Avoid repeated freeze/thaw cycles.
UniProt Primary AC:	O94953 (UniProt , ExPASy)
Gene Symbol:	KDM4B

Datasheet

Version: 3.0.0

Revision date: 27 Jun 2025



KEGG: hsa:23030

String: [9606.ENSP00000159111](#)

Molecular Weight: Calculated MW: 122 kDa

Buffer: PBS containing 0.09% sodium azide.

Note: THIS PRODUCT IS FOR RESEARCH USE ONLY. NOT FOR USE IN DIAGNOSTIC, THERAPEUTIC OR COSMETIC PROCEDURES. NOT FOR HUMAN OR ANIMAL CONSUMPTION.

For Reference Only