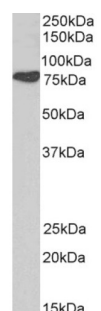


Cortactin (CTTN) Antibody

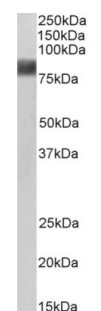
Catalogue No.: abx430868



abx430868 (0.01 µg/ml) staining of Mouse Brain lysate (35 µg protein in RIPA buffer). Primary incubation was 1 hour. Detected by chemiluminescence.



abx430868 (0.1 µg/ml) staining of Human Brain (Cerebellum) lysate (35 µg protein in RIPA buffer). Primary incubation was 1 hour. Detected by chemiluminescence.



abx430868 (0.03 µg/ml) staining of HEK293 cell lysate (35 µg protein in RIPA buffer). Primary incubation was 1 hour. Detected by chemiluminescence.

Cortactin Antibody is a Goat Polyclonal antibody against Cortactin.

Target: Cortactin (CTTN)

Clonality: Polyclonal

Reactivity: Human, Mouse, Rat

Tested Applications: P-ELISA, WB

Host: Goat

Recommended dilutions: P-ELISA: 1/32000, WB: 0.01-0.03 µg/ml. Optimal dilutions/concentrations should be determined by the end user.

Conjugation: Unconjugated

Datasheet

Version: 1.0.0
Revision date: 09 Jun 2025



Immunogen:	abx269086 - N-Terminus: WKASAGHAVSIA-C
Isotype:	IgG
Form:	Liquid
Purification:	Purified from goat serum by ammonium sulphate precipitation followed by antigen affinity chromatography using the immunizing peptide.
Storage:	Aliquot and store at -20°C. Avoid repeated freeze/thaw cycles.
Gene Symbol:	CTTN
GeneID:	2017 13043
NCBI Accession:	NP_005222.2, NP_612632.1
Buffer:	Tris saline, pH 7.3, containing 0.02% sodium azide and 0.5% bovine serum albumin.
Specificity:	Predicted to react with Dog and Cow Cortactin.
Concentration:	0.5 mg/ml
Note:	THIS PRODUCT IS FOR RESEARCH USE ONLY. NOT FOR USE IN DIAGNOSTIC, THERAPEUTIC OR COSMETIC PROCEDURES. NOT FOR HUMAN OR ANIMAL CONSUMPTION.