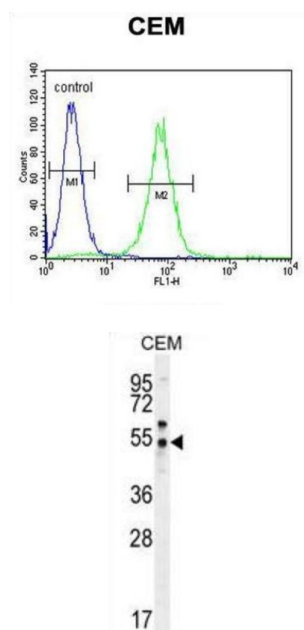


## Prostate-Specific Membrane Antigen-Like Protein (PSMAL) Antibody

Catalogue No.: abx026539



FOLH1B has both folate hydrolase and N-acetylated-alpha-linked-acidic dipeptidase (NAALADase) activity (By similarity) and exhibits a dipeptidyl-peptidase IV type activity (By similarity).

**Target:** Prostate-Specific Membrane Antigen-Like Protein (PSMAL)

**Clonality:** Polyclonal

**Reactivity:** Human

**Tested Applications:** ELISA, WB, FCM

**Host:** Rabbit

**Recommended dilutions:** WB: 1/1000, FCM: 1/10 - 1/50. Optimal dilutions/concentrations should be determined by the end user.

**Conjugation:** Unconjugated

**Immunogen:** KLH-conjugated synthetic peptide between 395-423 amino acids from the C-terminal region of human PSMAL.

**Isotype:** IgG

**Form:** Liquid

# Datasheet

Version: 4.0.0

Revision date: 16 Jul 2025



<b>Purification:</b>	Purified through a protein A column, followed by peptide affinity purification.
<b>Storage:</b>	Aliquot and store at -20°C. Avoid repeated freeze/thaw cycles.
<b>UniProt Primary AC:</b>	Q9HBA9 ( <a href="#">UniProt</a> , <a href="#">ExPASy</a> )
<b>Gene Symbol:</b>	FOLH1B
<b>Molecular Weight:</b>	Calculated MW: 50 kDa
<b>Buffer:</b>	PBS containing 0.09% sodium azide.
<b>Note:</b>	THIS PRODUCT IS FOR RESEARCH USE ONLY. NOT FOR USE IN DIAGNOSTIC, THERAPEUTIC OR COSMETIC PROCEDURES. NOT FOR HUMAN OR ANIMAL CONSUMPTION.

For Reference Only