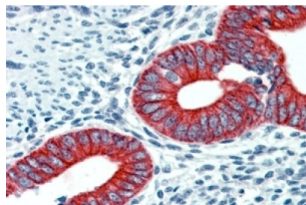
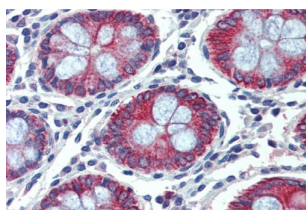


Erythrocyte Membrane Protein Band 4.1 Like 2 (EPB41L2) Antibody

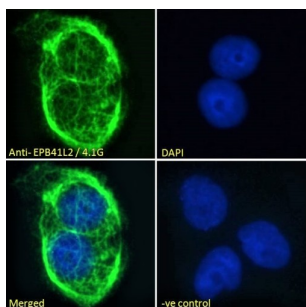
Catalogue No.: abx430853



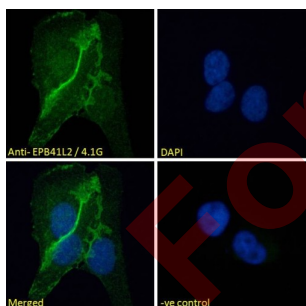
abx430853 (2.5 µg/ml) staining of paraffin embedded Human Uterus. Steamed antigen retrieval with citrate buffer pH 6, AP-staining.



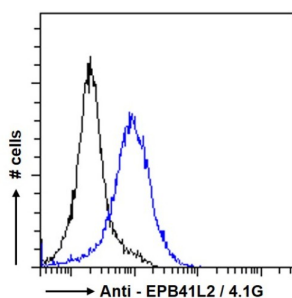
abx430853 (2.5 µg/ml) staining of paraffin embedded Human Colon. Steamed antigen retrieval with citrate buffer pH 6, AP-staining.



Immunofluorescence analysis of paraformaldehyde fixed A431 cells, permeabilized with 0.15% Triton. Primary incubation 1hr (10 µg/ml) followed by AF488 secondary antibody (2 µg/ml), showing membrane staining. The nuclear stain is DAPI (blue). Negative control: Unimmunized goat IgG (10 µg/ml) followed by AF488 secondary antibody (2 µg/ml).



Immunofluorescence analysis of paraformaldehyde fixed U2OS cells, permeabilized with 0.15% Triton. Primary incubation 1hr (10 µg/ml) followed by AF488 secondary antibody (2 µg/ml), showing cell junction staining. The nuclear stain is DAPI (blue). Negative control: Unimmunized goat IgG (10 µg/ml) followed by AF488 secondary antibody (2 µg/ml).



Flow cytometry analysis of paraformaldehyde fixed A431 cells (blue line), permeabilized with 0.5% Triton. Primary incubation 1hr (10 µg/ml) followed by AF488 secondary antibody (1 µg/ml). IgG control: Unimmunized goat IgG (black line) followed by AF488 secondary antibody.

Datasheet

Version: 2.0.0
Revision date: 05 Jun 2025



EPB41L2 Antibody is a Goat Polyclonal antibody against EPB41L2.

Target:	Erythrocyte Membrane Protein Band 4.1 Like 2 (EPB41L2)
Clonality:	Polyclonal
Reactivity:	Human
Tested Applications:	P-ELISA, IHC, IF/ICC, FCM
Host:	Goat
Recommended dilutions:	P-ELISA: 1/32000. Optimal dilutions/concentrations should be determined by the end user.
Conjugation:	Unconjugated
Immunogen:	abx615319 - Internal region, 593-604 AA: C-RREVRSPKAPH
Isotype:	IgG
Form:	Liquid
Purification:	Purified from goat serum by ammonium sulphate precipitation followed by antigen affinity chromatography using the immunizing peptide.
Storage:	Aliquot and store at -20°C. Avoid repeated freeze/thaw cycles.
Gene Symbol:	EPB41L2
GeneID:	2037
NCBI Accession:	NP_001422.1, NP_001129026.1, NP_001186317.1, NP_001239589.1, NP_001337228.1, NP_001337230.1, NP_001337232.1, NP_001337233.1, NP_001337236.1, NP_001337243.1, NP_001337249.1
Buffer:	Tris saline, pH 7.3, containing 0.02% sodium azide and 0.5% bovine serum albumin.
Concentration:	0.5 mg/ml
Note:	THIS PRODUCT IS FOR RESEARCH USE ONLY. NOT FOR USE IN DIAGNOSTIC, THERAPEUTIC OR COSMETIC PROCEDURES. NOT FOR HUMAN OR ANIMAL CONSUMPTION.