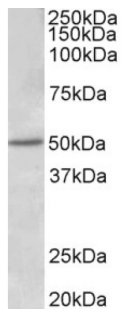
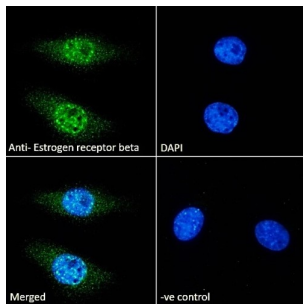


Estrogen Receptor 2 (ESR2) Antibody

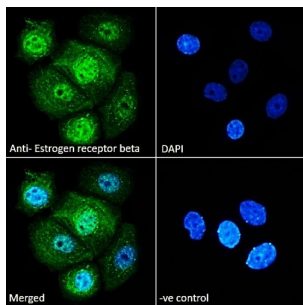
Catalogue No.: abx432664



abx432664 (1 µg/ml) staining of Human Placenta lysate (35 µg protein in RIPA buffer). Primary incubation was 1 hour. Detected by chemiluminescence.



Immunofluorescence analysis of paraformaldehyde fixed HeLa cells, permeabilized with 0.15% Triton. Primary incubation 1hr (10 µg/ml) followed by Alexa Fluor 488 secondary antibody (2 µg/ml), showing nuclear staining. The nuclear stain is DAPI (blue). Negative control: Unimmunized goat IgG (10 µg/ml) followed by Alexa Fluor 488 secondary antibody (2 µg/ml).



Immunofluorescence analysis of paraformaldehyde fixed MCF7 cells, permeabilized with 0.15% Triton. Primary incubation 1hr (10 µg/ml) followed by Alexa Fluor 488 secondary antibody (2 µg/ml), showing strong nuclear and weak cytoplasmic staining. The nuclear stain is DAPI (blue). Negative control: Unimmunized goat IgG (10 µg/ml) followed by Alexa Fluor 488 secondary antibody (2 µg/ml).

Estrogen Receptor 2 Antibody is a Goat Polyclonal antibody against Estrogen Receptor 2.

Target: Estrogen Receptor 2 (ESR2)

Clonality: Polyclonal

Reactivity: Human

Tested Applications: P-ELISA, WB, IF/ICC

Host: Goat

Recommended dilutions: P-ELISA: 1/128000. Optimal dilutions/concentrations should be determined by the end user.

Conjugation: Unconjugated

Datasheet

Version: 3.0.0
Revision date: 02 Oct 2025



Immunogen:	abx616841 - Internal region, 417-428 AA: C-TQDADSSRKLAH
Isotype:	IgG
Form:	Liquid
Purification:	Purified from goat serum by ammonium sulphate precipitation followed by antigen affinity chromatography using the immunizing peptide.
Storage:	Aliquot and store at -20°C. Avoid repeated freeze/thaw cycles.
Gene Symbol:	ESR2
GeneID:	2100
NCBI Accession:	NP_001428.1, NP_001035365.1, NP_001201831.1, NP_001201832.1
Buffer:	Tris saline, pH 7.3, containing 0.02% sodium azide and 0.5% bovine serum albumin.
Concentration:	0.5 mg/ml
Note:	THIS PRODUCT IS FOR RESEARCH USE ONLY. NOT FOR USE IN DIAGNOSTIC, THERAPEUTIC OR COSMETIC PROCEDURES. NOT FOR HUMAN OR ANIMAL CONSUMPTION.

For Reference Only