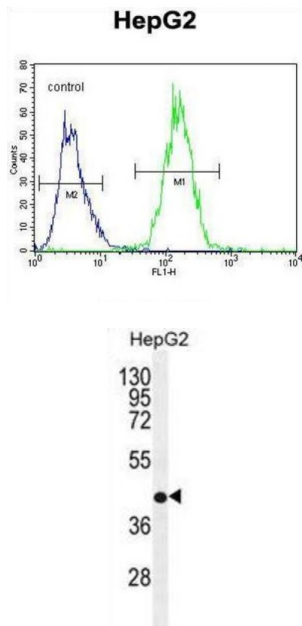


## Retinol Dehydrogenase 13 (RDH13) Antibody

Catalogue No.: abx026565



Retinol Dehydrogenase 13 (RDH13) Antibody is a Rabbit Polyclonal antibody against Retinol Dehydrogenase 13 (RDH13). This gene encodes a mitochondrial short-chain dehydrogenase/reductase, which catalyzes the reduction and oxidation of retinoids. The encoded enzyme may function in retinoic acid production and may also protect the mitochondria against oxidative stress. Alternatively spliced transcript variants have been described.

**Target:** Retinol Dehydrogenase 13 (RDH13)

**Clonality:** Polyclonal

**Reactivity:** Human

**Tested Applications:** ELISA, WB, FCM

**Host:** Rabbit

**Recommended dilutions:** WB: 1/1000, FCM: 1/10 - 1/50. Optimal dilutions/concentrations should be determined by the end user.

**Conjugation:** Unconjugated

**Immunogen:** KLH-conjugated synthetic peptide between 166-194 amino acids from the Central region of human RDH13.

**Isotype:** IgG

# Datasheet

Version: 3.0.0  
Revision date: 28 Aug 2025



<b>Form:</b>	Liquid
<b>Purification:</b>	Purified through a protein A column, followed by peptide affinity purification.
<b>Storage:</b>	Aliquot and store at -20°C. Avoid repeated freeze/thaw cycles.
<b>UniProt Primary AC:</b>	Q8NBN7 ( <a href="#">UniProt</a> , <a href="#">ExPASy</a> )
<b>Gene Symbol:</b>	RDH13
<b>GeneID:</b>	<a href="#">112724</a>
<b>NCBI Accession:</b>	NP_001139443.1, NM_001145971.1
<b>HGNC:</b>	19978
<b>KEGG:</b>	hsa:112724
<b>Ensembl:</b>	ENSG00000160439
<b>String:</b>	<a href="#">9606.ENSP00000391121</a>
<b>Molecular Weight:</b>	Calculated MW: 35.9 kDa
<b>Buffer:</b>	PBS containing 0.09% sodium azide.
<b>Note:</b>	THIS PRODUCT IS FOR RESEARCH USE ONLY. NOT FOR USE IN DIAGNOSTIC, THERAPEUTIC OR COSMETIC PROCEDURES. NOT FOR HUMAN OR ANIMAL CONSUMPTION.