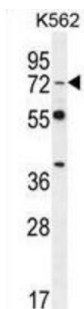
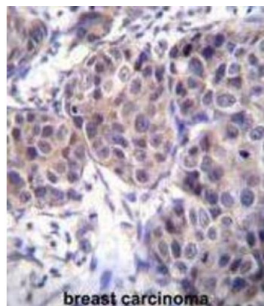
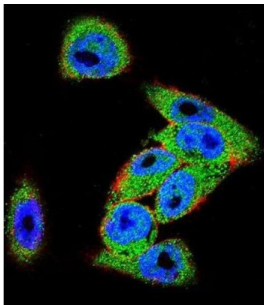


## Segment Polarity Protein Dishevelled Homolog DVL-3 (DVL3) Antibody

Catalogue No.: abx026567



This gene is a member of a multi-gene family which shares strong similarity with the *Drosophila* dishevelled gene, *dsh*. The *Drosophila* dishevelled gene encodes a cytoplasmic phosphoprotein that regulates cell proliferation.

**Target:** Segment Polarity Protein Dishevelled Homolog DVL-3 (DVL3)

**Clonality:** Polyclonal

**Reactivity:** Human, Mouse

**Tested Applications:** ELISA, WB, IHC, IF/ICC

**Host:** Rabbit

**Recommended dilutions:** WB: 1/2000, IHC-P: 1/10 - 1/50, IF/ICC: 1/10 - 1/50. Not tested in IHC-F. Optimal dilutions/concentrations should be determined by the end user.

# Datasheet

Version: 4.0.0  
Revision date: 22 Aug 2025



<b>Conjugation:</b>	Unconjugated
<b>Immunogen:</b>	KLH-conjugated synthetic peptide between 530-557 amino acids from the C-terminal region of human DVL3.
<b>Isotype:</b>	IgG
<b>Form:</b>	Liquid
<b>Purification:</b>	Purified through a protein A column, followed by peptide affinity purification.
<b>Storage:</b>	Aliquot and store at -20°C. Avoid repeated freeze/thaw cycles.
<b>UniProt Primary AC:</b>	Q92997 ( <a href="#">UniProt</a> , <a href="#">ExPASy</a> )
<b>KEGG:</b>	hsa:1857
<b>String:</b>	<a href="#">9606.ENSP00000316054</a>
<b>Molecular Weight:</b>	Calculated MW: 78.1 kDa
<b>Buffer:</b>	PBS containing 0.09% sodium azide.
<b>Specificity:</b>	Predicted to react with Mouse DVL3.
<b>Note:</b>	THIS PRODUCT IS FOR RESEARCH USE ONLY. NOT FOR USE IN DIAGNOSTIC, THERAPEUTIC OR COSMETIC PROCEDURES. NOT FOR HUMAN OR ANIMAL CONSUMPTION.