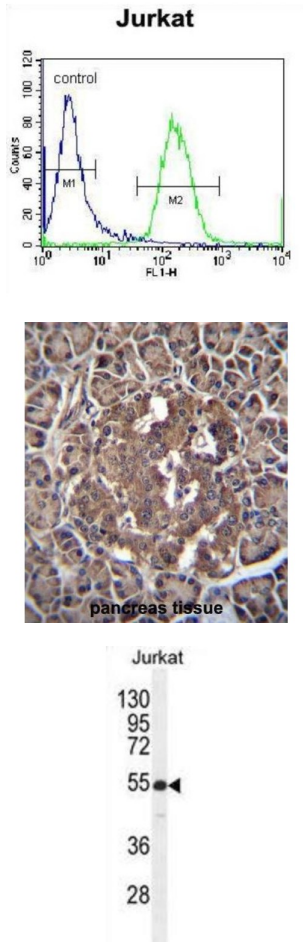


# Recombining Binding Protein Suppressor Of Hairless-Like Protein (RBPJL) Antibody

Catalogue No.: abx026575



In mouse, recombining binding protein L (RBP-L) is a transcription factor that binds to DNA sequences almost identical to that bound by the Notch receptor signalling pathway transcription factor RBP-J. However, unlike RBP-J, RBP-L does not interact with Notch receptors. RBP-L has been shown to activate transcription in concert with Epstein-Barr virus nuclear antigen-2 (EBNA2). The protein encoded by this gene is similar in sequence to the mouse RPB-L protein and Drosophila suppressor of hairless protein.

<b>Target:</b>	Recombining Binding Protein Suppressor Of Hairless-Like Protein (RBPJL)
<b>Clonality:</b>	Polyclonal
<b>Reactivity:</b>	Human
<b>Tested Applications:</b>	ELISA, WB, IHC, FCM
<b>Host:</b>	Rabbit

# Datasheet

Version: 3.0.0

Revision date: 01 Sep 2025



**Recommended dilutions:** WB: 1/2000, IHC-P: 1/10 - 1/50, FCM: 1/10 - 1/50. Not tested in IHC-F. Optimal dilutions/concentrations should be determined by the end user.

**Conjugation:** Unconjugated

**Immunogen:** KLH-conjugated synthetic peptide between 8-36 amino acids from the N-terminal region of human RBPJL.

**Isotype:** IgG

**Form:** Liquid

**Purification:** Purified through a protein A column, followed by peptide affinity purification.

**Storage:** Aliquot and store at -20°C. Avoid repeated freeze/thaw cycles.

**UniProt Primary AC:** Q9UBG7 ([UniProt](#), [ExPASy](#))

**Gene Symbol:** RBPJL

**String:** [9606.ENSP00000341243](#)

**Molecular Weight:** Calculated MW: 56.8 kDa

**Buffer:** PBS containing 0.09% sodium azide.

**Note:** THIS PRODUCT IS FOR RESEARCH USE ONLY. NOT FOR USE IN DIAGNOSTIC, THERAPEUTIC OR COSMETIC PROCEDURES. NOT FOR HUMAN OR ANIMAL CONSUMPTION.