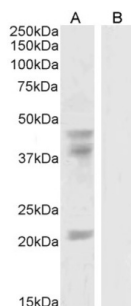
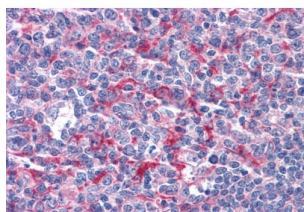


GA Binding Protein Subunit Beta 1 (GABPB1) Antibody

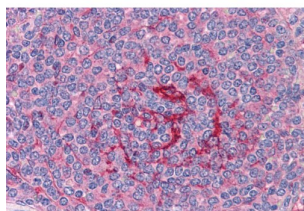
Catalogue No.: abx432722



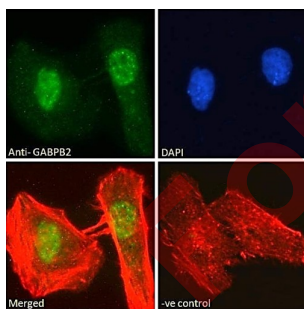
Western blot analysis of (A) HeLa cell lysate and (B) HeLa cell lysate blocked with peptide (35 µg in RIPA buffer) using GA Binding Protein Subunit Beta 1 (GABPB1) Antibody (0.3 µg/ml).



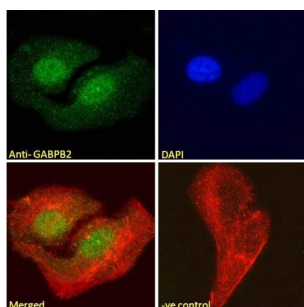
Immunohistochemistry analysis of paraffin-embedded Human tonsil tissue using GA Binding Protein Subunit Beta 2 Antibody (3.75 µg/ml) and AP staining. Steam antigen retrieval was performed with citrate buffer, pH 6.0.



Immunohistochemistry analysis of paraffin-embedded Human spleen tissue using GA Binding Protein Subunit Beta 2 Antibody (3.75 µg/ml) and AP staining. Steam antigen retrieval was performed with citrate buffer, pH 6.0.



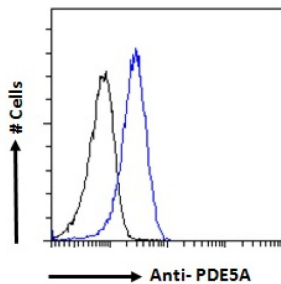
Immunofluorescence analysis of paraformaldehyde fixed HeLa cells using GA Binding Protein Subunit Beta 2 Antibody (10 µg/ml, 1 hour incubation), followed by AF488 secondary antibody (2 µg/ml). Samples were permeabilized with 0.15% Triton. Actin filaments were stained with phalloidin (red) and the nuclear stain is DAPI (blue). Negative control: Unimmunized goat IgG (10 µg/ml) followed by AF488 secondary antibody (2 µg/ml).



Immunofluorescence analysis of paraformaldehyde fixed U2OS cells using GA Binding Protein Subunit Beta 2 Antibody (10 µg/ml, 1 hour incubation), followed by AF488 secondary antibody (2 µg/ml). Samples were permeabilized with 0.15% Triton. Actin filaments were stained with phalloidin (red) and the nuclear stain is DAPI (blue). Negative control: Unimmunized goat IgG (10 µg/ml) followed by AF488 secondary antibody (2 µg/ml).

Datasheet

Version: 3.0.0
Revision date: 07 Jun 2025



Flow cytometry analysis of paraformaldehyde fixed HEK293 cells (blue line) using GA Binding Protein Subunit Beta 2 Antibody (10 µg/ml, 1 hour incubation), followed by AF488 secondary antibody (1 µg/ml). Samples were permeabilized with 0.5% Triton. IgG control: Unimmunized goat IgG (black line) followed by AF488 secondary antibody.

GABPB1 Antibody is a Goat Polyclonal antibody against GABPB1.

Target:	GA Binding Protein Subunit Beta 1 (GABPB1)
Clonality:	Polyclonal
Reactivity:	Human
Tested Applications:	P-ELISA, WB, IHC, IF/ICC, FCM
Host:	Goat
Recommended dilutions:	P-ELISA: 1/32000, WB: 0.3-1 µg/ml, IHC: 3.75 µg/ml, IF/ICC: 10 µg/ml, FCM: 10 µg/ml. Optimal dilutions/concentrations should be determined by the end user.
Conjugation:	Unconjugated
Immunogen:	abx615160 - Internal region of Human GABPB1: C-SENSSKATDETG
Isotype:	IgG
Form:	Liquid
Purification:	Purified from goat serum by ammonium sulphate precipitation followed by antigen affinity chromatography using the immunizing peptide.
Storage:	Aliquot and store at -20°C. Avoid repeated freeze/thaw cycles.
Gene Symbol:	GABPB1
GeneID:	2553
NCBI Accession:	NP_005245.2, NP_002032.2, NP_001307844.1
Molecular Weight:	Calculated MW: 42.5 kDa Observed MW (WB): 38 kDa, 45 kDa, 22 kDa

Datasheet

Version: 3.0.0

Revision date: 07 Jun 2025



Buffer: Tris saline, pH 7.3, containing 0.02% sodium azide and 0.5% bovine serum albumin.

Specificity: Predicted to cross-react with Dog GABPB2 by sequence similarity.

Concentration: 0.5 mg/ml

Note: THIS PRODUCT IS FOR RESEARCH USE ONLY. NOT FOR USE IN DIAGNOSTIC, THERAPEUTIC OR COSMETIC PROCEDURES. NOT FOR HUMAN OR ANIMAL CONSUMPTION.

For Reference Only