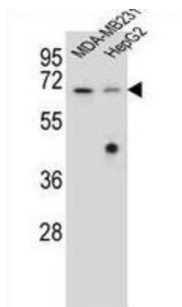
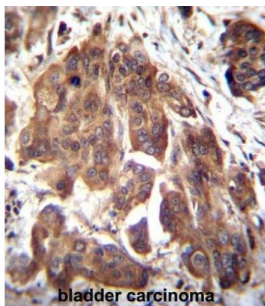
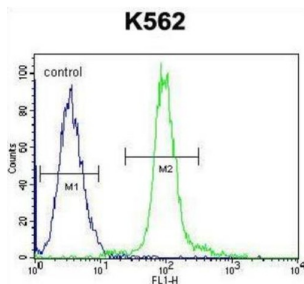


Glomulin (GLMN) Antibody

Catalogue No.: abx026578



This gene encodes a phosphorylated protein that is a member of a Skp1-Cullin-F-box-like complex. The protein is essential for normal development of the vasculature and mutations in this gene have been associated with glomuvenous malformations, also called glomangiomas. Alternatively spliced variants that encode different protein isoforms have been described but the full-length nature of only one has been determined. [provided by RefSeq].

| | |
|-----------------------------|---------------------|
| Target: | Glomulin (GLMN) |
| Clonality: | Polyclonal |
| Reactivity: | Human |
| Tested Applications: | ELISA, WB, IHC, FCM |
| Host: | Rabbit |

Recommended dilutions: WB: 1/1000, IHC-P: 1/10 - 1/50, FCM: 1/10 - 1/50. Not tested in IHC-F. Optimal dilutions/concentrations should be determined by the end user.

Datasheet

Version: 2.0.0
Revision date: 06 Jun 2025



| | |
|----------------------------|--|
| Conjugation: | Unconjugated |
| Immunogen: | KLH-conjugated synthetic peptide between 498-525 amino acids from the C-terminal region of human GLMN. |
| Isotype: | IgG |
| Form: | Liquid |
| Purification: | Purified through a protein A column, followed by peptide affinity purification. |
| Storage: | Aliquot and store at -20°C. Avoid repeated freeze/thaw cycles. |
| UniProt Primary AC: | Q92990 (UniProt , ExPASy) |
| KEGG: | hsa:11146 |
| String: | 9606.ENSP00000359385 |
| Molecular Weight: | Calculated MW: 68.2 kDa |
| Buffer: | PBS containing 0.09% sodium azide. |
| Specificity: | Predicted to react with Mouse GLMN. |
| Note: | THIS PRODUCT IS FOR RESEARCH USE ONLY. NOT FOR USE IN DIAGNOSTIC, THERAPEUTIC OR COSMETIC PROCEDURES. NOT FOR HUMAN OR ANIMAL CONSUMPTION. |