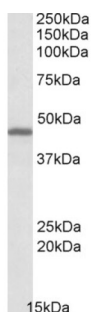
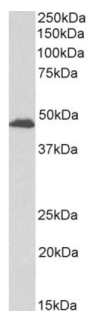


## Uracil Nucleotide/Cysteinyl Leukotriene Receptor (GPR17) Antibody

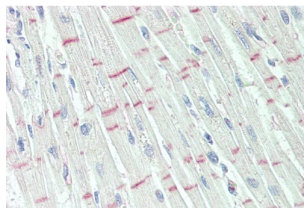
Catalogue No.: abx432028



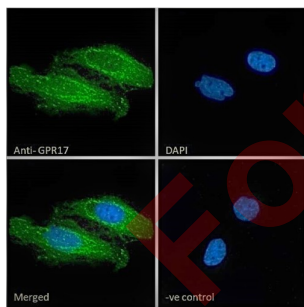
abx432028 (0.1 µg/ml) staining of Human Cerebellum lysate (35 µg protein in RIPA buffer). Primary incubation was 1 hour. Detected by chemiluminescence.



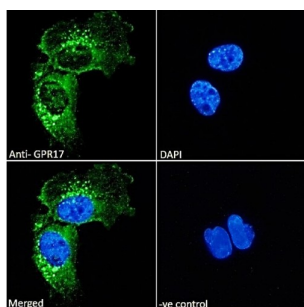
abx432028 (0.3 µg/ml) staining of Rat Brain lysate (35 µg protein in RIPA buffer). Primary incubation was 1 hour. Detected by chemiluminescence.



abx432028 (10 µg/ml) staining of paraffin embedded Human Heart. Steamed antigen retrieval with citrate buffer pH 6, AP-staining.



Immunofluorescence analysis of paraformaldehyde fixed HeLa cells, permeabilized with 0.15% Triton. Primary incubation 1hr (10 µg/ml) followed by AF488 secondary antibody (2 µg/ml), showing vesicle staining. The nuclear stain is DAPI (blue). Negative control: Unimmunized goat IgG (10 µg/ml) followed by AF488 secondary antibody (2 µg/ml).



Immunofluorescence analysis of paraformaldehyde fixed U251 cells, permeabilized with 0.15% Triton. Primary incubation 1hr (10 µg/ml) followed by AF488 secondary antibody (2 µg/ml), showing membrane and vesicle staining. The nuclear stain is DAPI (blue). Negative control: Unimmunized goat IgG (10 µg/ml) followed by AF488 secondary antibody (2 µg/ml).

# Datasheet

Version: 3.0.0  
Revision date: 22 Jun 2025



GPR17 Antibody is a Goat Polyclonal antibody against GPR17.

<b>Target:</b>	Uracil Nucleotide/Cysteinyl Leukotriene Receptor (GPR17)
<b>Clonality:</b>	Polyclonal
<b>Reactivity:</b>	Human, Mouse
<b>Tested Applications:</b>	P-ELISA, WB, IF/ICC
<b>Host:</b>	Goat
<b>Recommended dilutions:</b>	P-ELISA: 1/4000. Optimal dilutions/concentrations should be determined by the end user.
<b>Conjugation:</b>	Unconjugated
<b>Immunogen:</b>	<a href="#">abx616068</a> - C-Terminus: C-EGKTNESSLSAKSE
<b>Isotype:</b>	IgG
<b>Form:</b>	Liquid
<b>Purification:</b>	Purified from goat serum by ammonium sulphate precipitation followed by antigen affinity chromatography using the immunizing peptide.
<b>Storage:</b>	Aliquot and store at -20°C. Avoid repeated freeze/thaw cycles.
<b>Gene Symbol:</b>	GPR17
<b>GeneID:</b>	<a href="#">2840</a> <a href="#">574402</a> <a href="#">767613</a>
<b>NCBI Accession:</b>	NP_005282.1
<b>Buffer:</b>	Tris saline, pH 7.3, containing 0.02% sodium azide and 0.5% bovine serum albumin.
<b>Concentration:</b>	0.5 mg/ml
<b>Note:</b>	THIS PRODUCT IS FOR RESEARCH USE ONLY. NOT FOR USE IN DIAGNOSTIC, THERAPEUTIC OR COSMETIC PROCEDURES. NOT FOR HUMAN OR ANIMAL CONSUMPTION.