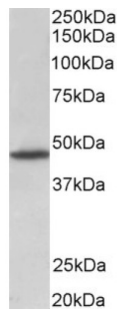


G Protein Coupled Receptor 83 (GPR83) Antibody

Catalogue No.: abx431286



abx431286 (1 µg/ml) staining of Rat Brain lysate (35 µg protein in RIPA buffer). Primary incubation was 1 hour. Detected by chemiluminescence.

GPR83 Antibody is a Goat Polyclonal antibody against GPR83.

Target:	G Protein Coupled Receptor 83 (GPR83)
Clonality:	Polyclonal
Reactivity:	Human, Mouse, Rat
Tested Applications:	P-ELISA, WB
Host:	Goat
Recommended dilutions:	P-ELISA: 1/8000. Optimal dilutions/concentrations should be determined by the end user.
Conjugation:	Unconjugated
Immunogen:	abx616723 - Internal region, 59-71 AA: C-RRYGAESQNPTVK
Isotype:	IgG
Form:	Liquid
Purification:	Purified from goat serum by ammonium sulphate precipitation followed by antigen affinity chromatography using the immunizing peptide.
Storage:	Aliquot and store at -20°C. Avoid repeated freeze/thaw cycles.
Gene Symbol:	GPR83
GeneID:	10888 14608 140595
NCBI Accession:	NP_057624.3

Datasheet

Version: 3.0.0

Revision date: 16 Aug 2025



Buffer: Tris saline, pH 7.3, containing 0.02% sodium azide and 0.5% bovine serum albumin.

Concentration: 0.5 mg/ml

Note: THIS PRODUCT IS FOR RESEARCH USE ONLY. NOT FOR USE IN DIAGNOSTIC, THERAPEUTIC OR COSMETIC PROCEDURES. NOT FOR HUMAN OR ANIMAL CONSUMPTION.

For Reference Only