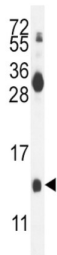
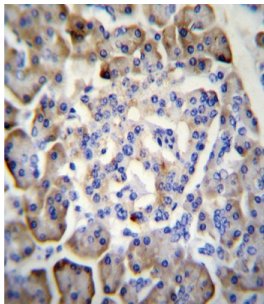
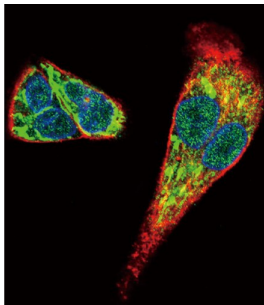


## Midkine (MDK) Antibody

Catalogue No.: abx026591



Midkine is a retinoic acid-responsive, heparin-binding growth factor expressed in various cell types during embryogenesis. It promotes angiogenesis, cell growth, and cell migration. Midkine is also expressed in several carcinomas, suggesting that it may play a role in tumorigenesis, perhaps through its effects on angiogenesis (summary by Reynolds et al., 2004 [PubMed 15197188]).

**Target:** Midkine (MDK)

**Clonality:** Polyclonal

**Reactivity:** Human

**Tested Applications:** ELISA, WB, IHC, IF/ICC

**Host:** Rabbit

**Recommended dilutions:** WB: 1/2000, IHC-P: 1/10 - 1/50, IF/ICC: 1/10 - 1/50. Not tested in IHC-F. Optimal dilutions/concentrations should be determined by the end user.

# Datasheet

Version: 2.0.0  
Revision date: 10 Jun 2025



<b>Conjugation:</b>	Unconjugated
<b>Immunogen:</b>	KLH-conjugated synthetic peptide between 113-143 amino acids from the C-terminal region of human MDK.
<b>Isotype:</b>	IgG
<b>Form:</b>	Liquid
<b>Purification:</b>	Purified Rabbit Polyclonal Antibody.
<b>Storage:</b>	Aliquot and store at -20°C. Avoid repeated freeze/thaw cycles.
<b>UniProt Primary AC:</b>	P21741 ( <a href="#">UniProt</a> , <a href="#">ExPASy</a> )
<b>KEGG:</b>	hsa:4192
<b>String:</b>	<a href="#">9606.ENSP00000385451</a>
<b>Molecular Weight:</b>	Calculated MW: 15.6 kDa
<b>Buffer:</b>	PBS containing 0.09% sodium azide.
<b>Specificity:</b>	Predicted to react with Mouse MDK.
<b>Note:</b>	THIS PRODUCT IS FOR RESEARCH USE ONLY. NOT FOR USE IN DIAGNOSTIC, THERAPEUTIC OR COSMETIC PROCEDURES. NOT FOR HUMAN OR ANIMAL CONSUMPTION.