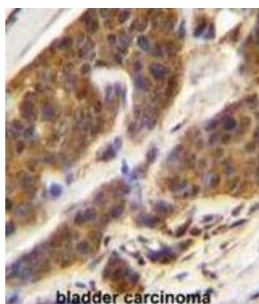


Complement Factor D (CFD) Antibody

Catalogue No.: abx026595



The protein encoded by this gene is a member of the trypsin family of peptidases. The encoded protein is a component of the alternative complement pathway best known for its role in humoral suppression of infectious agents. This protein is also a serine protease that is secreted by adipocytes into the bloodstream. Finally, the encoded protein has a high level of expression in fat, suggesting a role for adipose tissue in immune system biology.

Target: Complement Factor D (CFD)

Clonality: Polyclonal

Reactivity: Human

Tested Applications: ELISA, WB, IHC

Host: Rabbit

Recommended dilutions: WB: 1/1000, IHC-P: 1/50 - 1/100. Not tested in IHC-F. Optimal dilutions/concentrations should be determined by the end user.

Conjugation: Unconjugated

Immunogen: KLH-conjugated synthetic peptide between 68-99 amino acids from the N-terminal region of human CFD.

Isotype: IgG

Datasheet

Version: 3.0.0

Revision date: 10 Jun 2025



Form:	Liquid
Purification:	Purified through a protein A column, followed by peptide affinity purification.
Storage:	Aliquot and store at -20°C. Avoid repeated freeze/thaw cycles.
UniProt Primary AC:	P00746 (UniProt , ExPASy)
Gene Symbol:	CFD
KEGG:	hsa:1675
String:	9606.ENSP00000332139
Molecular Weight:	Calculated MW: 27 kDa
Buffer:	PBS containing 0.09% sodium azide.
Specificity:	Predicted to react with Cow and Pig CFD.
Note:	THIS PRODUCT IS FOR RESEARCH USE ONLY. NOT FOR USE IN DIAGNOSTIC, THERAPEUTIC OR COSMETIC PROCEDURES. NOT FOR HUMAN OR ANIMAL CONSUMPTION.

For Reference Only