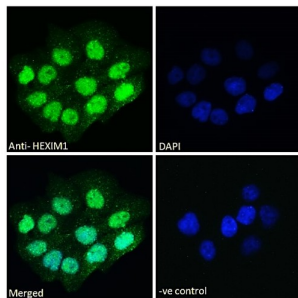
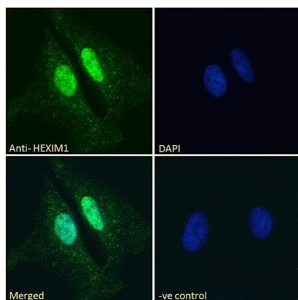


## Protein HEXIM1 (HEXIM1) Antibody

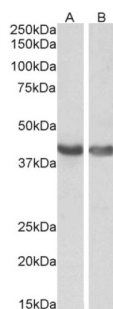
Catalogue No.: abx431534



IF analysis of A431 cells, using Protein HEXIM1 (HEXIM1) Antibody (10 µg/ml) with a secondary antibody conjugated to AF488 (2 µg/ml), showing nuclear staining. Blue DAPI was used as a nuclear stain. Non specific Goat IgG antibody with a secondary antibody conjugated to AF488 was used as a negative control.



IF analysis of HeLa cells, using Protein HEXIM1 (HEXIM1) Antibody (10 µg/ml) with a secondary antibody conjugated to AF488 (2 µg/ml), showing nuclear staining. Blue DAPI was used as a nuclear stain. Non specific Goat IgG antibody with a secondary antibody conjugated to AF488 was used as a negative control.



WB analysis of Human (A) and Mouse (B) Heart lysates using Protein HEXIM1 (HEXIM1) Antibody (0.1 µg/ml).

HEXIM1 Antibody is a Goat Polyclonal antibody against HEXIM1.

**Target:** Protein HEXIM1 (HEXIM1)

**Clonality:** Polyclonal

**Reactivity:** Human, Mouse

**Tested Applications:** P-ELISA, WB, IF/ICC

**Host:** Goat

**Recommended dilutions:** P-ELISA: 1/128000. Optimal dilutions/concentrations should be determined by the end user.

**Conjugation:** Unconjugated

# Datasheet

Version: 4.0.0  
Revision date: 04 Oct 2025



<b>Immunogen:</b>	<a href="#">abx269775</a> - C-Terminus: C-HRQQERAPLSKFGD
<b>Isotype:</b>	IgG
<b>Form:</b>	Liquid
<b>Purification:</b>	Purified from goat serum by ammonium sulphate precipitation followed by antigen affinity chromatography using the immunizing peptide.
<b>Storage:</b>	Aliquot and store at -20°C. Avoid repeated freeze/thaw cycles.
<b>Gene Symbol:</b>	HEXIM1
<b>GeneID:</b>	<a href="#">10614</a> <a href="#">192231</a>
<b>NCBI Accession:</b>	NP_006451.1
<b>Buffer:</b>	Tris saline, pH 7.3, containing 0.02% sodium azide and 0.5% bovine serum albumin.
<b>Concentration:</b>	0.5 mg/ml
<b>Note:</b>	THIS PRODUCT IS FOR RESEARCH USE ONLY. NOT FOR USE IN DIAGNOSTIC, THERAPEUTIC OR COSMETIC PROCEDURES. NOT FOR HUMAN OR ANIMAL CONSUMPTION.