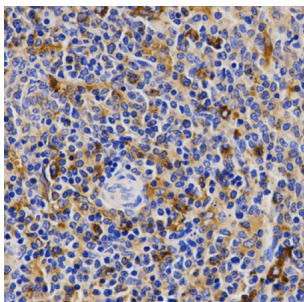
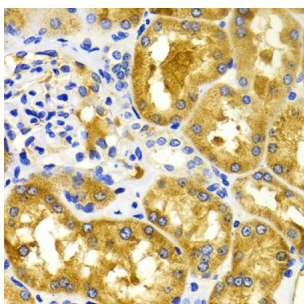


Cyclin Dependent Kinase 20 (CDK20) Antibody

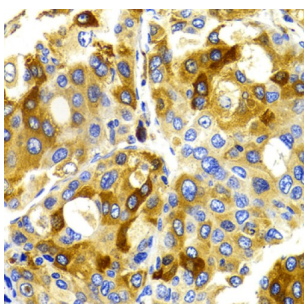
Catalogue No.: abx002060



Immunohistochemistry analysis of paraffin-embedded Rat spleen using CDK20 Antibody at dilution of 1/200 (40x lens). Microwave antigen retrieval performed in 0.01 M PBS Buffer (pH 7.2) prior to IHC staining.



Immunohistochemistry analysis of paraffin-embedded Human kidney using CDK20 Antibody at dilution of 1/100 (40x lens). Microwave antigen retrieval performed in 0.01 M PBS Buffer (pH 7.2) prior to IHC staining.



Immunohistochemistry analysis of paraffin-embedded Human liver cancer using CDK20 Antibody at dilution of 1/100 (40x lens). Microwave antigen retrieval performed in 0.01 M PBS Buffer (pH 7.2) prior to IHC staining.

CDK20 Antibody is a Rabbit Polyclonal antibody against CDK20. The protein encoded by this gene contains a kinase domain most closely related to the cyclin-dependent protein kinases. The encoded kinase may activate cyclin-dependent kinase 2 and is involved in cell growth. Alternatively spliced transcript variants encoding distinct isoforms have been reported.

Target: Cyclin Dependent Kinase 20 (CDK20)

Clonality: Polyclonal

Reactivity: Rat

Tested Applications: ELISA, IHC

Host: Rabbit

Recommended dilutions: ELISA: 1 µg/ml, IHC-P: 1/50 - 1/100. Not tested in IHC-F. Optimal dilutions/concentrations should be determined by the end user.

Datasheet

Version: 3.0.0
Revision date: 08 Jun 2025



Conjugation:	Unconjugated
Immunogen:	A synthetic peptide corresponding to a sequence within amino acids 200-300 of human CDK20.
Isotype:	IgG
Form:	Liquid
Purification:	Purified by affinity chromatography.
Storage:	Aliquot and store at -20°C. Avoid repeated freeze/thaw cycles.
UniProt Primary AC:	Q8IZL9 (UniProt , ExPASy)
Gene Symbol:	CDK20
GeneID:	23552
KEGG:	hsa:23552
String:	9606.ENSP00000322343
Molecular Weight:	Calculated MW: 39 kDa
Buffer:	PBS, pH 7.3, containing 0.02% sodium azide, 50% glycerol.
Concentration:	> 0.2 mg/ml
Note:	THIS PRODUCT IS FOR RESEARCH USE ONLY. NOT FOR USE IN DIAGNOSTIC, THERAPEUTIC OR COSMETIC PROCEDURES. NOT FOR HUMAN OR ANIMAL CONSUMPTION.