

Ubiquitin-Conjugating Enzyme E2 T (HSPC150) Antibody

Catalogue No.: abx430804

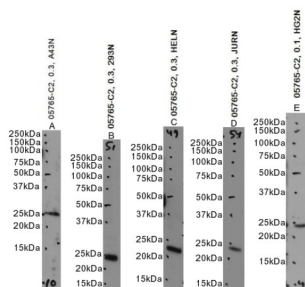


Image A, B, C and D: WB analysis using abx430804 (0.3 µg/ml) of A431, HEK293, HeLa and Jurkat nuclear cell lysate, Image E: WB analysis using abx430804 (0.1 µg/ml) of HepG2 nuclear cell lysate.

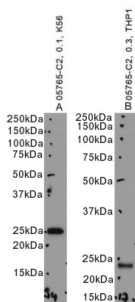
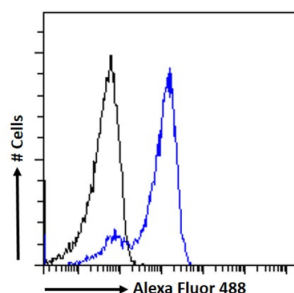
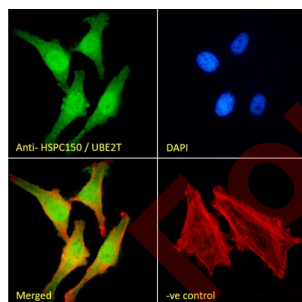


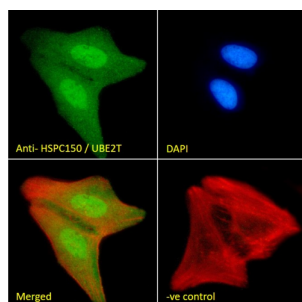
Image A: WB analysis using abx430804 of K562 cell lysate, Image B: THP-1 cell lysate.



Flow cytometry analysis of HeLa cells (blue line) using (10 µg/ml) followed by a secondary antibody conjugated to AF488 (1 µg/ml). Non-specific Goat IgG was used as a negative control followed by a secondary antibody conjugated to AF488.



IF analysis of HeLa cells using abx430804 (10 µg/ml) followed by a secondary antibody conjugated to AF488 (2 µg/ml). Actin filaments were stained with phalloidin (red) and the nuclear stain is DAPI (blue). Non-specific Goat IgG (10 µg/ml) was used as a negative control followed by a secondary antibody conjugated to AF488 (2 µg/ml).



IF analysis of U2OS cells using abx430804 (10 µg/ml) followed by a secondary antibody conjugated to AF488 (2 µg/ml). Actin filaments were stained with phalloidin (red) and the nuclear stain is DAPI (blue). Non-specific Goat IgG (10 µg/ml) was used as a negative control followed by a secondary antibody conjugated to AF488 (2 µg/ml).

Datasheet

Version: 3.0.0
Revision date: 13 Oct 2025



HSPC150 Antibody is a Goat Polyclonal antibody against HSPC150.

Target:	Ubiquitin-Conjugating Enzyme E2 T (HSPC150)
Clonality:	Polyclonal
Reactivity:	Human
Tested Applications:	P-ELISA, WB, IF/ICC, FCM
Host:	Goat
Recommended dilutions:	P-ELISA: 1/16000. Optimal dilutions/concentrations should be determined by the end user.
Conjugation:	Unconjugated
Immunogen:	abx269279 - C-Terminus: C-QLVGIEKKFHPDV
Isotype:	IgG
Form:	Liquid
Purification:	Purified from goat serum by ammonium sulphate precipitation followed by antigen affinity chromatography using the immunizing peptide.
Storage:	Aliquot and store at -20°C. Avoid repeated freeze/thaw cycles.
Gene Symbol:	UBE2T
GeneID:	29089
NCBI Accession:	NP_054895.1
Buffer:	Tris saline, pH 7.3, containing 0.02% sodium azide and 0.5% bovine serum albumin.
Concentration:	0.5 mg/ml
Note:	THIS PRODUCT IS FOR RESEARCH USE ONLY. NOT FOR USE IN DIAGNOSTIC, THERAPEUTIC OR COSMETIC PROCEDURES. NOT FOR HUMAN OR ANIMAL CONSUMPTION.