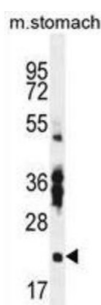
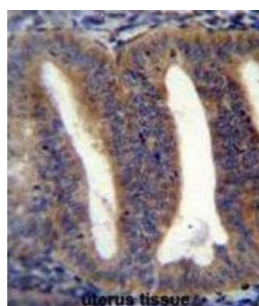


## RNA-Binding Protein With Multiple Splicing 2 (RBPMS2) Antibody

Catalogue No.: abx026605



RBPMS2 contains one RRM (RNA recognition motif) domain. The exact function of RBPMS2 remains unknown.

<b>Target:</b>	RNA-Binding Protein With Multiple Splicing 2 (RBPMS2)
<b>Clonality:</b>	Polyclonal
<b>Reactivity:</b>	Mouse
<b>Tested Applications:</b>	ELISA, WB, IHC
<b>Host:</b>	Rabbit
<b>Recommended dilutions:</b>	WB: 1/1000, IHC-P: 1/10 - 1/50. Not tested in IHC-F. Optimal dilutions/concentrations should be determined by the end user.
<b>Conjugation:</b>	Unconjugated
<b>Immunogen:</b>	KLH-conjugated synthetic peptide between 113-141 amino acids from the Central region of human RBPMS2.
<b>Isotype:</b>	IgG
<b>Form:</b>	Liquid
<b>Purification:</b>	Purified through a protein A column, followed by peptide affinity purification.

# Datasheet

Version: 3.0.0  
Revision date: 01 Oct 2025



**Storage:** Aliquot and store at -20°C. Avoid repeated freeze/thaw cycles.

**UniProt Primary AC:** Q6ZRY4 ([UniProt](#), [ExPASy](#))

**Gene Symbol:** RBPMS2

**KEGG:** hsa:348093

**String:** [9606.ENSP00000300069](#)

**Molecular Weight:** Calculated MW: 22.5 kDa

**Buffer:** PBS containing 0.09% sodium azide.

**Specificity:** Predicted to react with Zebrafish and Xenopus RBPMS2.

**Note:** THIS PRODUCT IS FOR RESEARCH USE ONLY. NOT FOR USE IN DIAGNOSTIC, THERAPEUTIC OR COSMETIC PROCEDURES. NOT FOR HUMAN OR ANIMAL CONSUMPTION.

For Reference Only