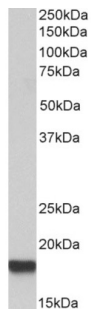
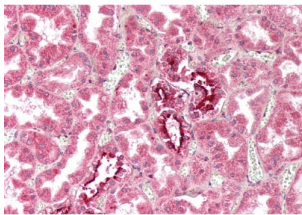


Interferon-Induced Transmembrane Protein 3 (IFITM3) Antibody

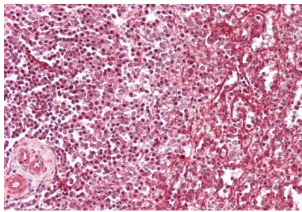
Catalogue No.: abx432839



abx432839 (0.5 µg/ml) staining of HeLa lysate (35 µg protein in RIPA buffer). Detected by chemiluminescence.



abx432839 (2.5 µg/ml) staining of paraffin embedded Human Kidney. Steamed antigen retrieval with citrate buffer pH 6, AP-staining.



abx432839 (2.5 µg/ml) staining of paraffin embedded Human Spleen. Steamed antigen retrieval with citrate buffer pH 6, AP-staining.

IFITM3 Antibody is a Goat Polyclonal antibody against IFITM3.

Target: Interferon-Induced Transmembrane Protein 3 (IFITM3)

Clonality: Polyclonal

Reactivity: Human

Tested Applications: P-ELISA, WB, IHC

Host: Goat

Recommended dilutions: P-ELISA: 1/64000. Optimal dilutions/concentrations should be determined by the end user.

Conjugation: Unconjugated

Datasheet

Version: 1.0.0
Revision date: 26 Jun 2025



Immunogen:	abx617336 - Internal region: C-HNPAPPTSTVIHIRS
Isotype:	IgG
Form:	Liquid
Purification:	Purified from goat serum by ammonium sulphate precipitation followed by antigen affinity chromatography using the immunizing peptide.
Storage:	Aliquot and store at -20°C. Avoid repeated freeze/thaw cycles.
Gene Symbol:	IFITM3
GeneID:	10410
NCBI Accession:	NP_066362.2
Buffer:	Tris saline, pH 7.3, containing 0.02% sodium azide and 0.5% bovine serum albumin.
Concentration:	0.5 mg/ml
Note:	THIS PRODUCT IS FOR RESEARCH USE ONLY. NOT FOR USE IN DIAGNOSTIC, THERAPEUTIC OR COSMETIC PROCEDURES. NOT FOR HUMAN OR ANIMAL CONSUMPTION.

For Reference Only