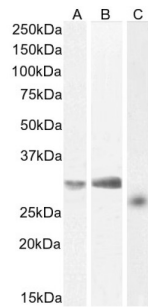


Linker For Activation of T-Cells Family, Member 2 (LAT2) Antibody

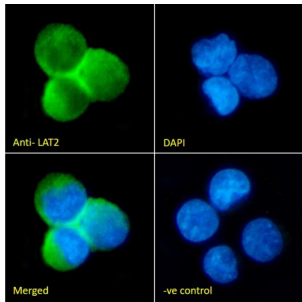
Catalogue No.:abx432916



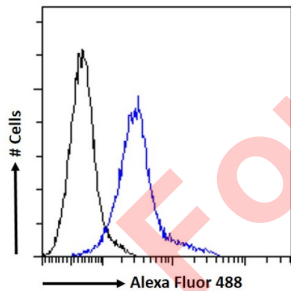
Western blot analysis of Daudi (A), U937 (B) and PBM (C) cell lysate (35 µg protein in RIPA buffer) using Linker For Activation of T-Cells Family, Member 2 (LAT2) Antibody (0.1 µg/ml). Detected by chemiluminescence.



Western blot analysis of Human Spleen lysate (35 µg protein in RIPA buffer) using Linker For Activation of T-Cells Family, Member 2 (LAT2) Antibody (0.3 µg/ml).



Immunofluorescence analysis of paraformaldehyde fixed U937 cells permeabilized with 0.15% Triton using Linker For Activation of T-Cells Family, Member 2 (LAT2) Antibody (10 µg/ml, 1 hour) followed by AF488 secondary antibody (2 µg/ml), and DAPI nuclear stain (blue). Negative control: Unimmunized goat IgG (10 µg/ml) followed by AF488 secondary antibody (2 µg/ml).



Flow cytometric analysis of paraformaldehyde fixed U937 cells (blue line) permeabilized with 0.5% Triton using Linker For Activation of T-Cells Family, Member 2 (LAT2) Antibody (10 µg/ml, 1 hour) followed by AF488 secondary antibody (1 µg/ml). IgG control: Unimmunized goat IgG (black line) followed by AF488 secondary antibody.

LAT2 Antibody is a Goat Polyclonal antibody against LAT2.

Target: Linker For Activation of T-Cells Family, Member 2 (LAT2)

Clonality: Polyclonal

Reactivity: Human

Datasheet

Version: 2.0.0
Revision date: 01 Oct 2025



Tested Applications: P-ELISA, WB, IF/ICC, FCM

Host: Goat

Recommended dilutions: P-ELISA: 1/128000. Optimal dilutions/concentrations should be determined by the end user.

Conjugation: Unconjugated

Immunogen: [abx617041](#) - Internal region: C-RSEKIYQQRSLRED

Isotype: IgG

Form: Liquid

Purification: Purified from goat serum by ammonium sulphate precipitation followed by antigen affinity chromatography using the immunizing peptide.

Storage: Aliquot and store at -20°C. Avoid repeated freeze/thaw cycles.

Gene Symbol: LAT2

GeneID: [7462](#)

NCBI Accession: NP_054865.2

Buffer: Tris saline, pH 7.3, containing 0.02% sodium azide and 0.5% bovine serum albumin.

Concentration: 0.5 mg/ml

Note: THIS PRODUCT IS FOR RESEARCH USE ONLY. NOT FOR USE IN DIAGNOSTIC, THERAPEUTIC OR COSMETIC PROCEDURES. NOT FOR HUMAN OR ANIMAL CONSUMPTION.