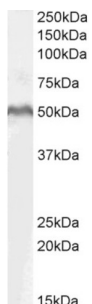


## Lymphoid Enhancer Binding Factor 1 (LEF1) Antibody

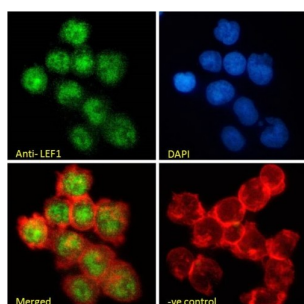
Catalogue No.: abx431385



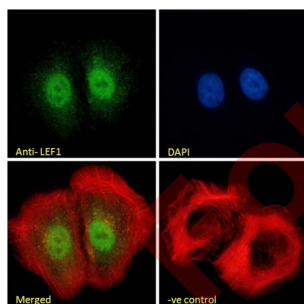
abx431385 (1 µg/ml) staining of MOLT4 lysate (35 µg protein in RIPA buffer). Detected by chemiluminescence.



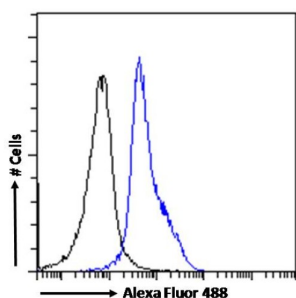
abx431385 (2 µg/ml) staining of K562 nuclear cell lysate (A) + peptide (B). (35 µg protein in RIPA buffer) Detected by chemiluminescence.



Immunofluorescence analysis of paraformaldehyde fixed Jurkat cells, permeabilized with 0.15% Triton. Primary incubation 1hr (10 µg/ml) followed by AF488 secondary antibody (2 µg/ml), showing nuclear staining. Actin filaments were stained with phalloidin (red) and the nuclear stain is DAPI (blue). Negative control: Unimmunized goat IgG (10 µg/ml) followed by AF488 secondary antibody (2 µg/ml).



Immunofluorescence analysis of paraformaldehyde fixed U2OS cells, permeabilized with 0.15% Triton. Primary incubation 1hr (10 µg/ml) followed by AF488 secondary antibody (2 µg/ml), showing nuclear staining. Actin filaments were stained with phalloidin (red) and the nuclear stain is DAPI (blue). Negative control: Unimmunized goat IgG (10 µg/ml) followed by AF488 secondary antibody (2 µg/ml).



Flow cytometry analysis of paraformaldehyde fixed Jurkat cells (blue line), permeabilized with 0.5% Triton. Primary incubation 1hr (10 µg/ml) followed by AF488 secondary antibody (1 µg/ml). IgG control: Unimmunized goat IgG (black line) followed by AF488 secondary antibody.

# Datasheet

Version: 2.0.0  
Revision date: 21 Aug 2025



LEF1 Antibody is a Goat Polyclonal antibody against LEF1.

<b>Target:</b>	Lymphoid Enhancer Binding Factor 1 (LEF1)
<b>Clonality:</b>	Polyclonal
<b>Reactivity:</b>	Human
<b>Tested Applications:</b>	P-ELISA, WB, IF/ICC, FCM
<b>Host:</b>	Goat
<b>Recommended dilutions:</b>	P-ELISA: 1/32000. Optimal dilutions/concentrations should be determined by the end user.
<b>Conjugation:</b>	Unconjugated
<b>Immunogen:</b>	<a href="#">abx269877</a> - Internal region: C-QHEQRKEQEPKRPH
<b>Isotype:</b>	IgG
<b>Form:</b>	Liquid
<b>Purification:</b>	Purified from goat serum by ammonium sulphate precipitation followed by antigen affinity chromatography using the immunizing peptide.
<b>Storage:</b>	Aliquot and store at -20°C. Avoid repeated freeze/thaw cycles.
<b>Gene Symbol:</b>	LEF1
<b>GeneID:</b>	<a href="#">51176</a> <a href="#">16842</a> <a href="#">161452</a>
<b>NCBI Accession:</b>	NP_057353.1, NP_001124185.1, NP_001124186.1, NP_001159591.1
<b>Buffer:</b>	Tris saline, pH 7.3, containing 0.02% sodium azide and 0.5% bovine serum albumin.
<b>Concentration:</b>	0.5 mg/ml
<b>Note:</b>	THIS PRODUCT IS FOR RESEARCH USE ONLY. NOT FOR USE IN DIAGNOSTIC, THERAPEUTIC OR COSMETIC PROCEDURES. NOT FOR HUMAN OR ANIMAL CONSUMPTION.